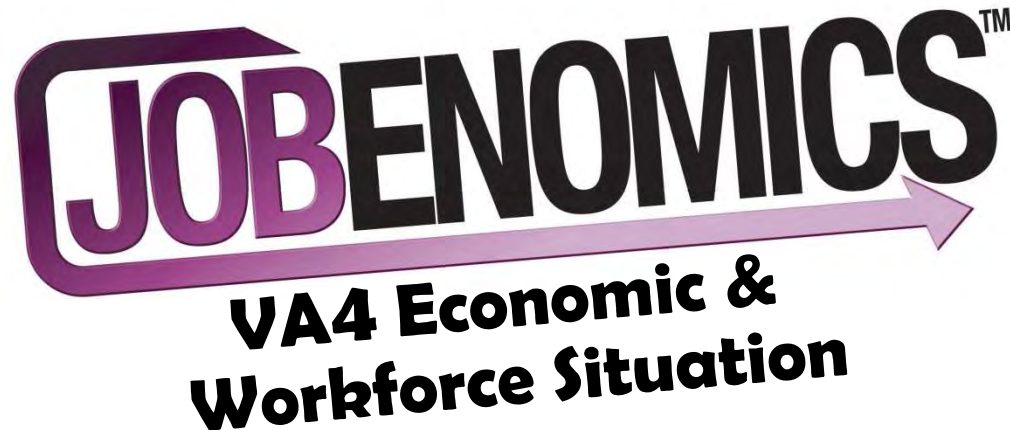


***Jobenomics* specializes in economic, community, business and workforce development.**



In association with Jobenomics, the Benjamin for Congress team created this series of economic and workforce infographics for the citizens of Virginia's 4th Congressional District.

Leon Benjamin

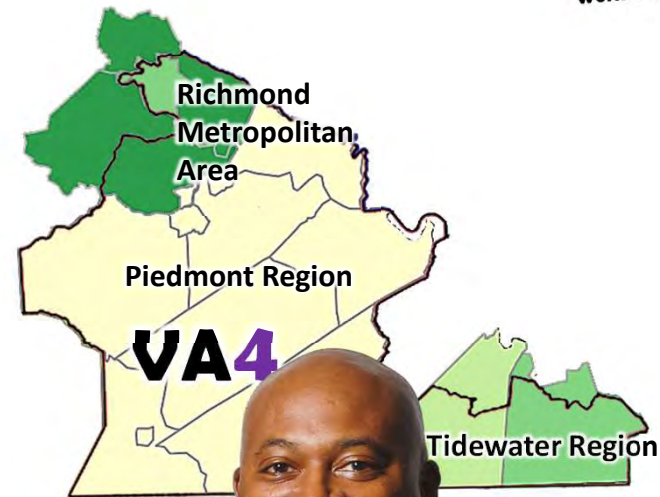
Jobenomics Senior Advisor & Candidate for U.S. Congress

9 February 2020

Prologue

“In order for me to serve you, I have to know you. In order for Virginians to serve each other, we must know each other. My team developed this presentation for all of us to know who we are.

*Most politicians prescribe one-shoe-fits-all approach. **I will build coalitions** that will implement solutions tailored to your unique community.”*



To know what Congressional District you reside, or know more about your District’s makeup, click on these links: [Find Your Representative](#) and [District Makeup](#).

About Jobenomics



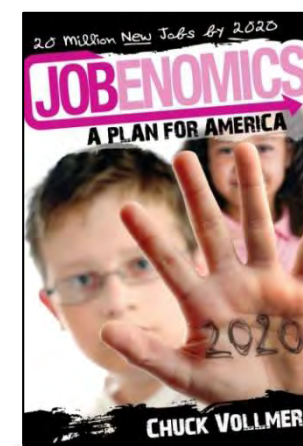
Bipartisan National Grassroots Movement

- Since 2010, estimated audience of 30 million
- Website averages 30,000 monthly page views
- Jobenomics America TV launched in 2018



Books, Research & Special Reports

- Focus on economic, community, small business and workforce development.
- First book established published 2010.
- Ten e-books and ninety special reports.



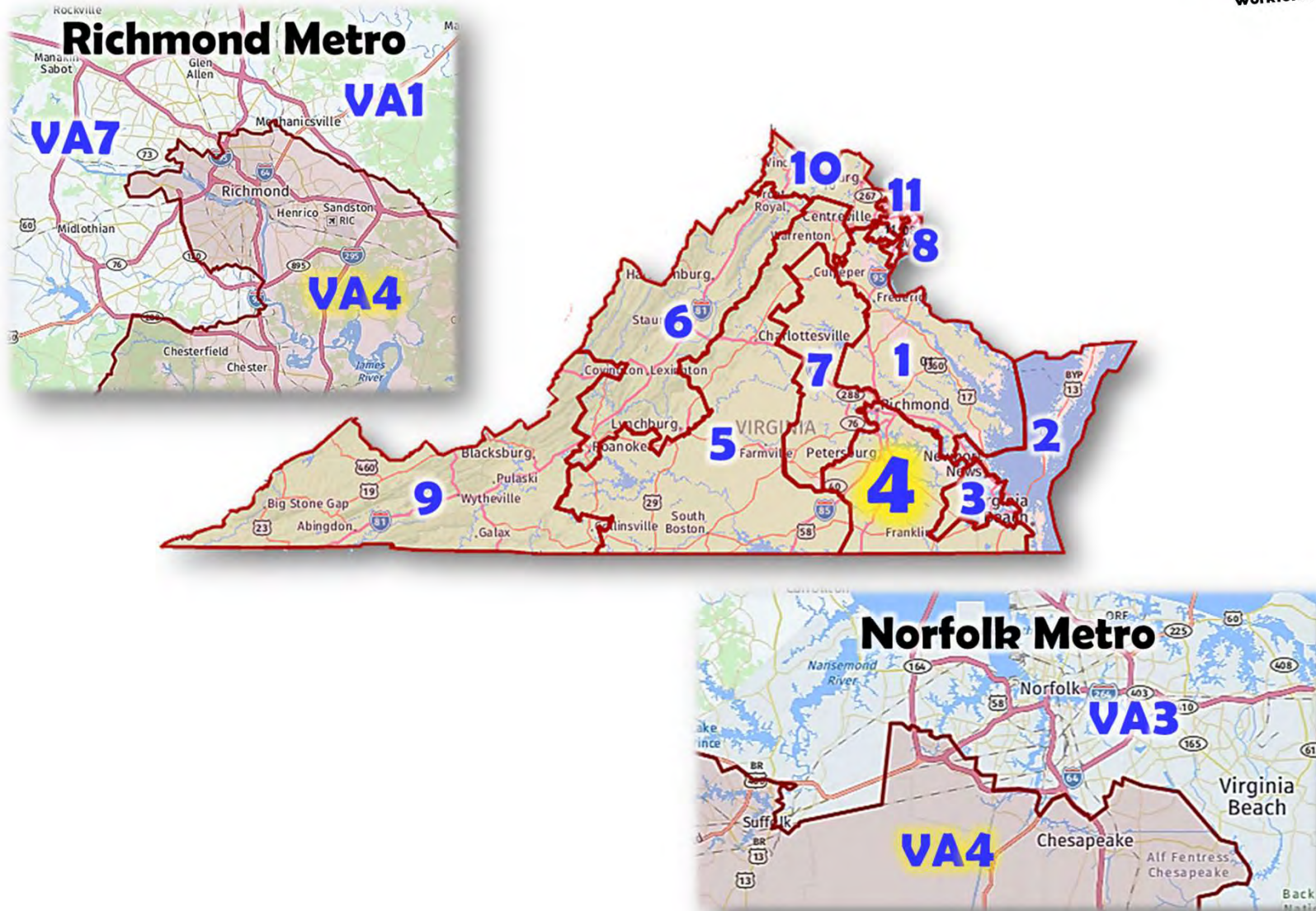
City and State Initiatives and Programs

Jobenomics.com

- Two dozen chapters led by local community leaders.
- Numerous startup programs implementable within 12-months.

Primary focus: economic, community, small business and workforce development at the base of America's socio-economic pyramid.

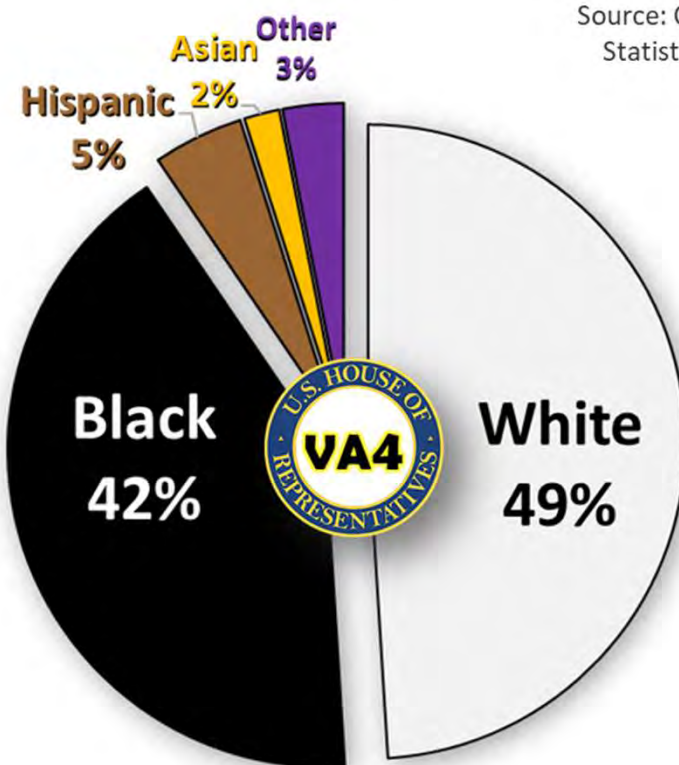
Virginian's Congressional District Map



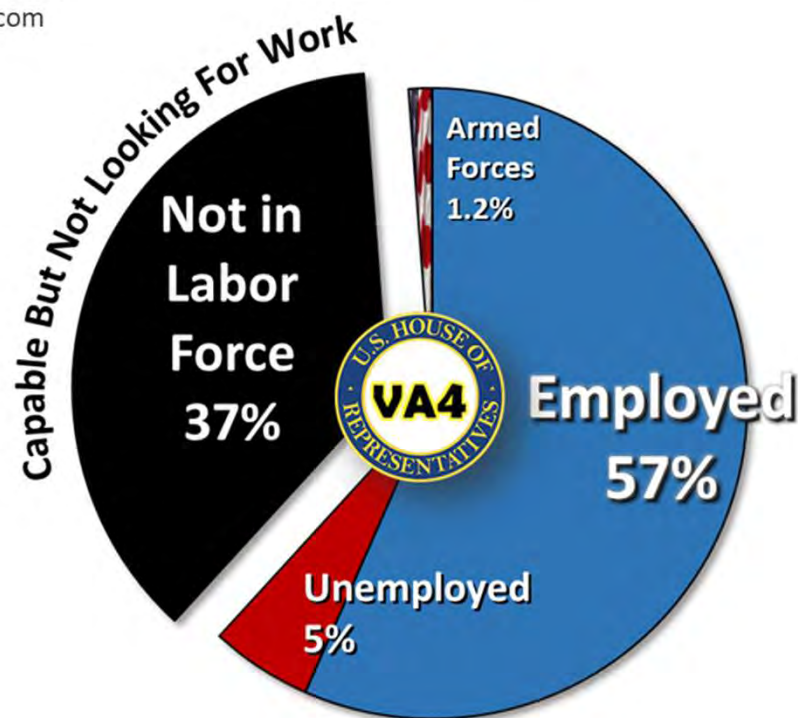
Virginia has 11 congressional districts, each represented by a member of the United States House of Representatives.

Key VA4 Demographic Metrics

Race & Ethnicity
All Ages



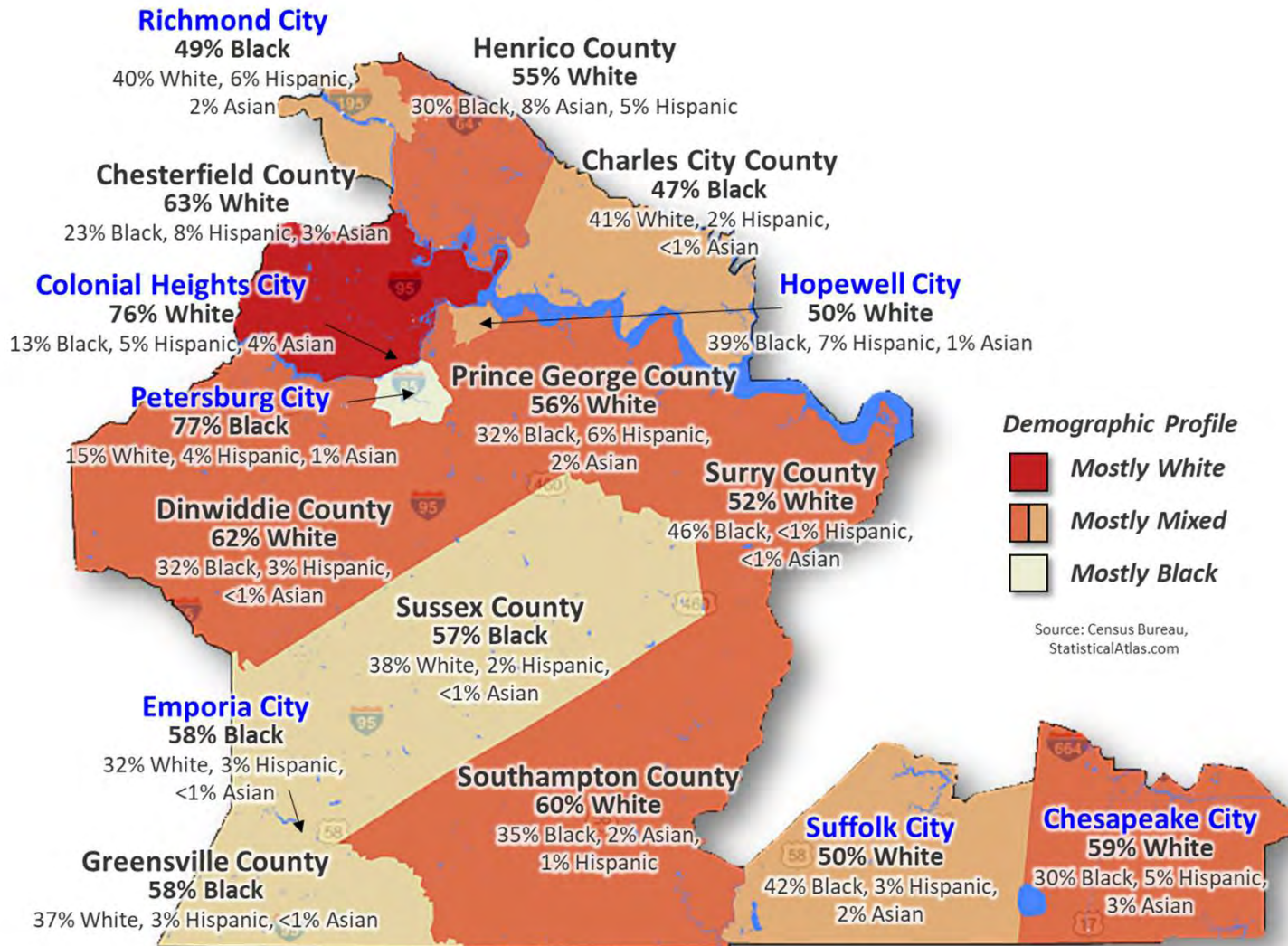
Working Age Employment
25 to 64 Years Old



Community development must start with an appreciation of our demographics and labor pools.

VA4 Race & Ethnicity Map

VA4 is a **diverse** group of 747,291 talented citizens.



VA4 is 53% White, 41% Black, 6% Hispanic, 2% Asian and 3% other.

Income Distribution By Metro Area & City

Median Household Income

USA \$61,937

Virginia \$72,577

Chesapeake

■ Metro \$72,214

■ Greenbrier \$59,469

Richmond

■ Metro \$67,703

■ City \$42,356

■ Inner City \$21,875

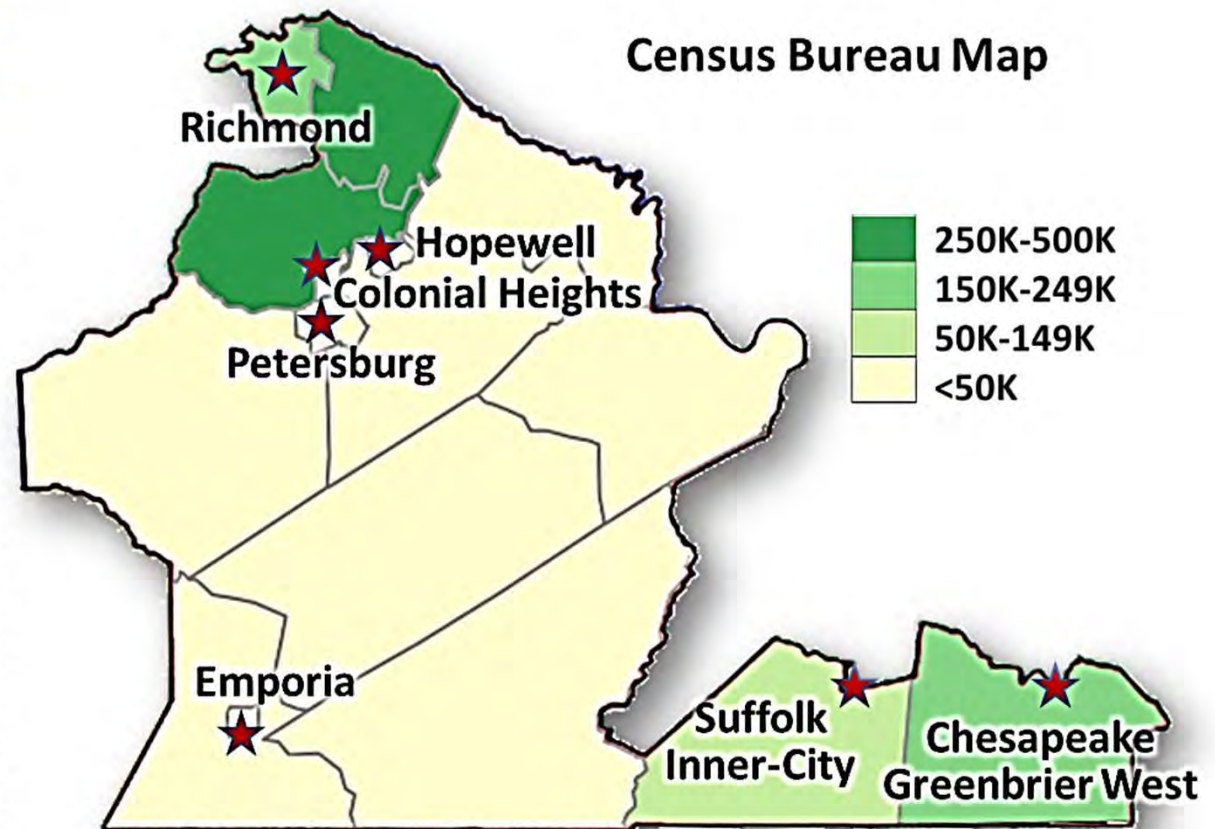
Colonial Heights \$50,952

Hopewell \$40,712

Petersburg \$33,939

Suffolk Inner City \$31,006

Emporia \$27,426



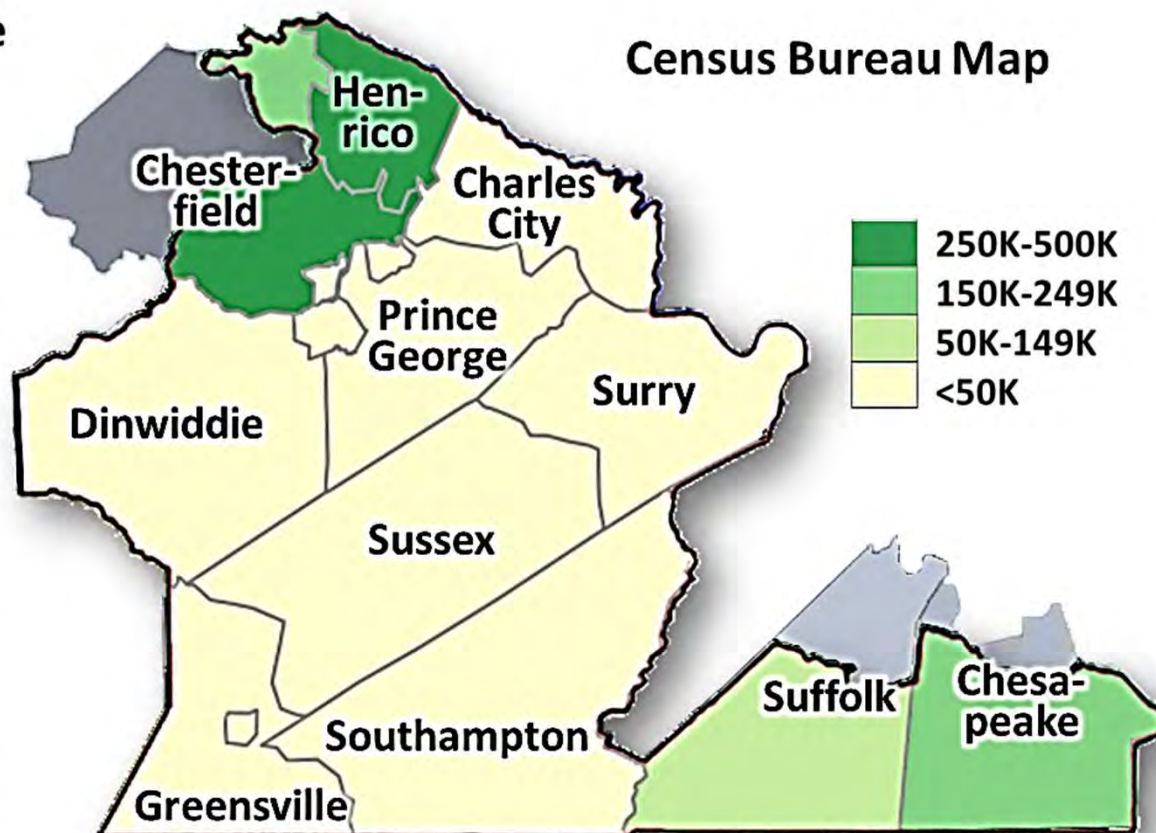
Richmond (\$42K) is one of the poorest capital cities in the region (Washington DC \$85K, Annapolis MD \$81K, Raleigh NC \$66K and Charleston WV \$46K—the poorest state in the USA).

Income Distribution By County

VA4 is comprised of citizens from 11 different counties.

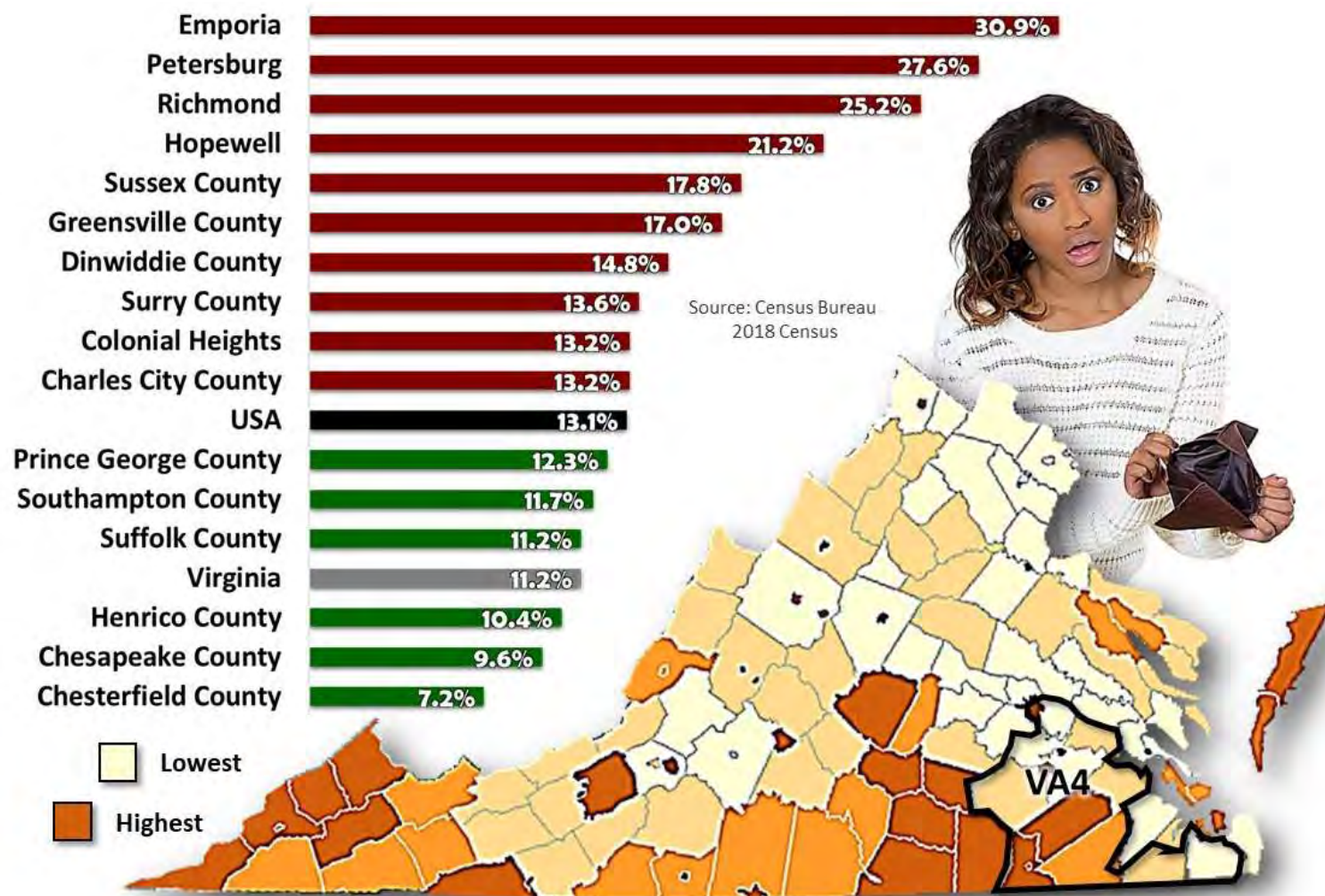
Median Household Income

Chesterfield	\$80,655
Chesapeake	\$72,214
Prince George	\$68,461
Suffolk	\$68,089
Henrico	\$68,069
Charles City	\$55,069
Surry	\$54,656
Dinwiddie	\$54,640
Southampton	\$53,681
Sussex	\$44,608
Greensville	\$42,121



Medium household income is highest in counties with large metropolitan populations and lowest in rural counties.

VA4 Poverty Rates



VA4 poverty rates are too high, especially in urban minority and rural white communities. Female Virginians are poverty prone.

Rural Brain Drain

Source: U.S. Federal Reserve Report



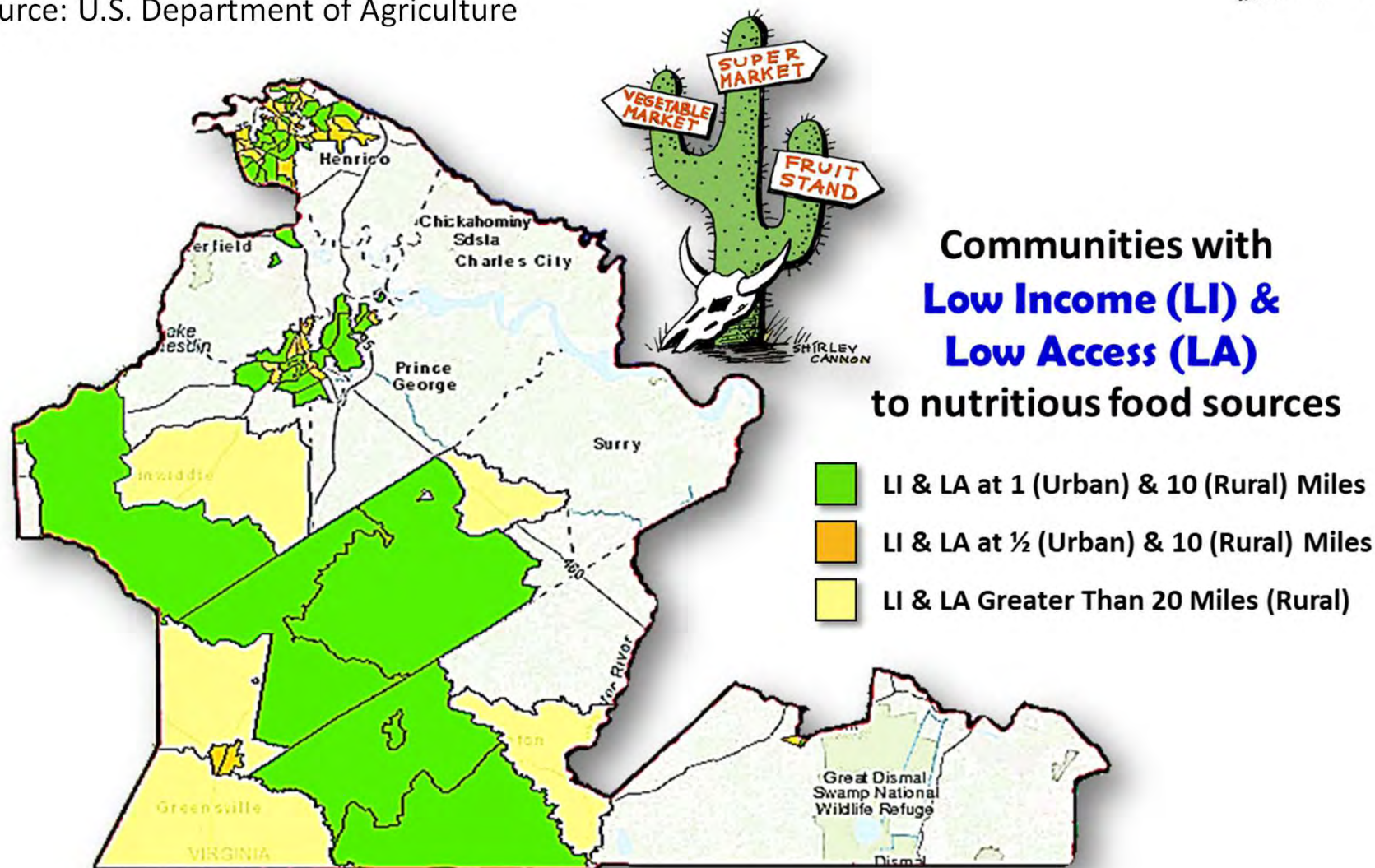
- “Rural America is aging, losing population, and lagging urban areas in the share of individuals holding college degrees.”
- “Between 2010 and 2016, about 68% of rural counties lost population, and only 7% grew more than 5%.”
- “Loss of college-educated young people from rural areas—commonly called “**rural brain drain**”—could have important effects on the economic vitality of these rural communities and raises questions about what rural policymakers should do to reverse this trend.”



“To stem the rural VA4 brain drain, we will mass produce micro businesses that are anchored in our rural communities .”

VA4 “Food Desert” Map

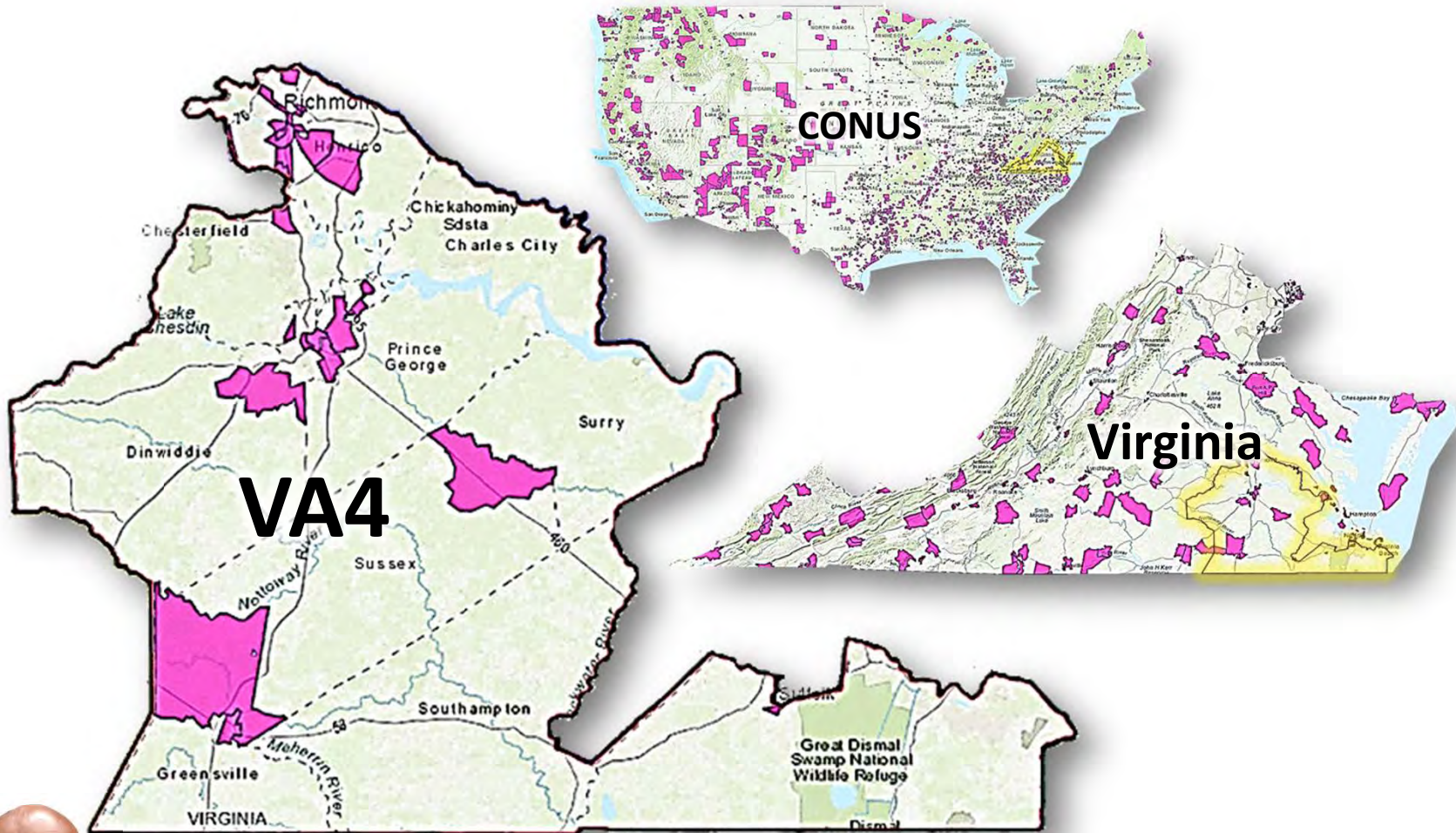
Source: U.S. Department of Agriculture



Medium household income is highest in counties with large metropolitan populations and lowest in rural counties.

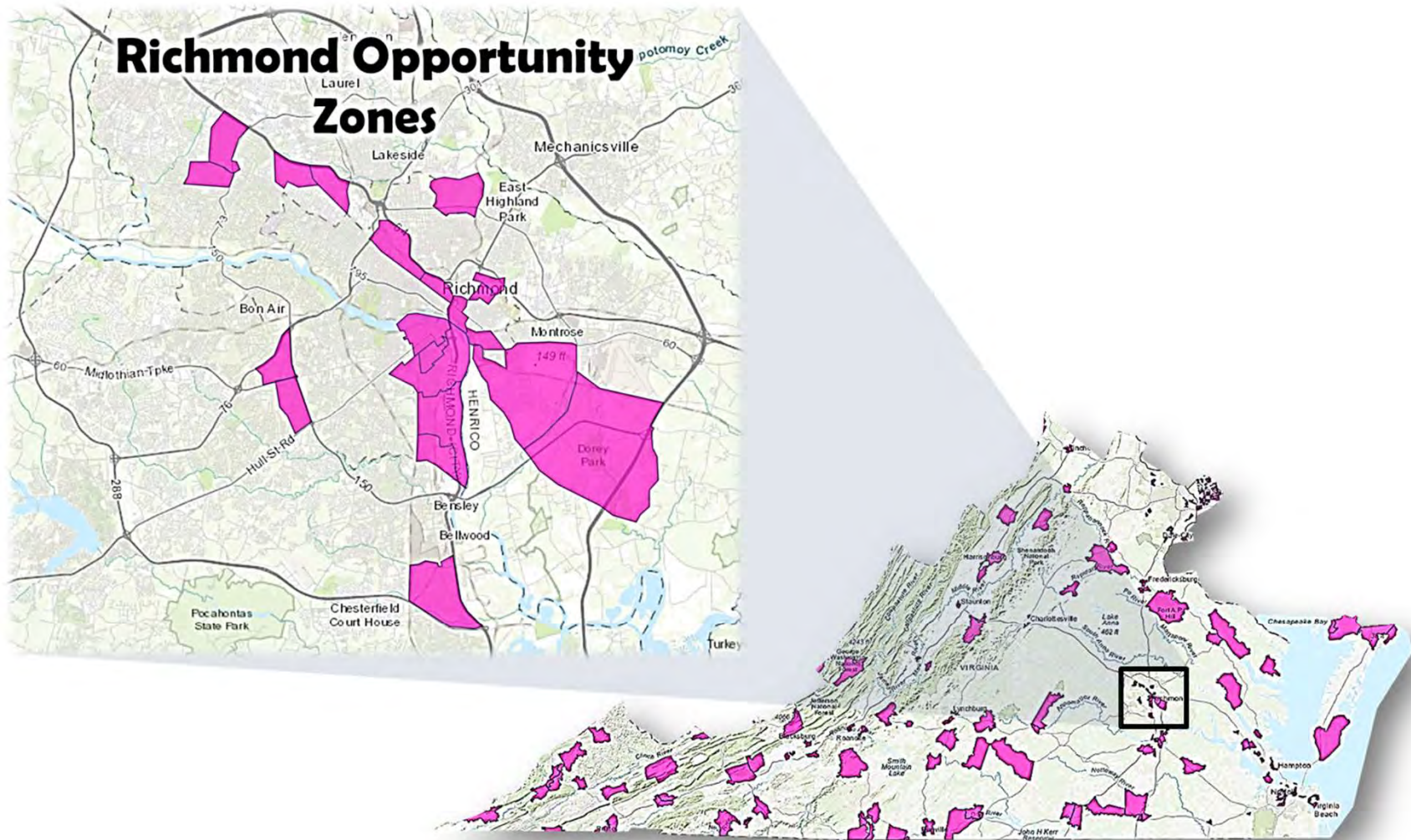
Opportunity Zones

OZones are the poorest (12.5%) Census Tracts in the USA.



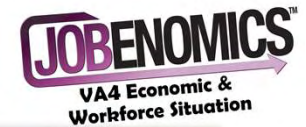
“My VA4 team is already pursuing funding from the 200 Opportunity Zone Funds that have \$45 billion to invest.”

Richmond Metro Opportunity Zones



Richmond has 11 QOZs, four in Chesterfield County and seven in Henrico County.

Jobenomics Richmond



***Jobenomics* deals with the process of creating and mass-producing small businesses and jobs.**



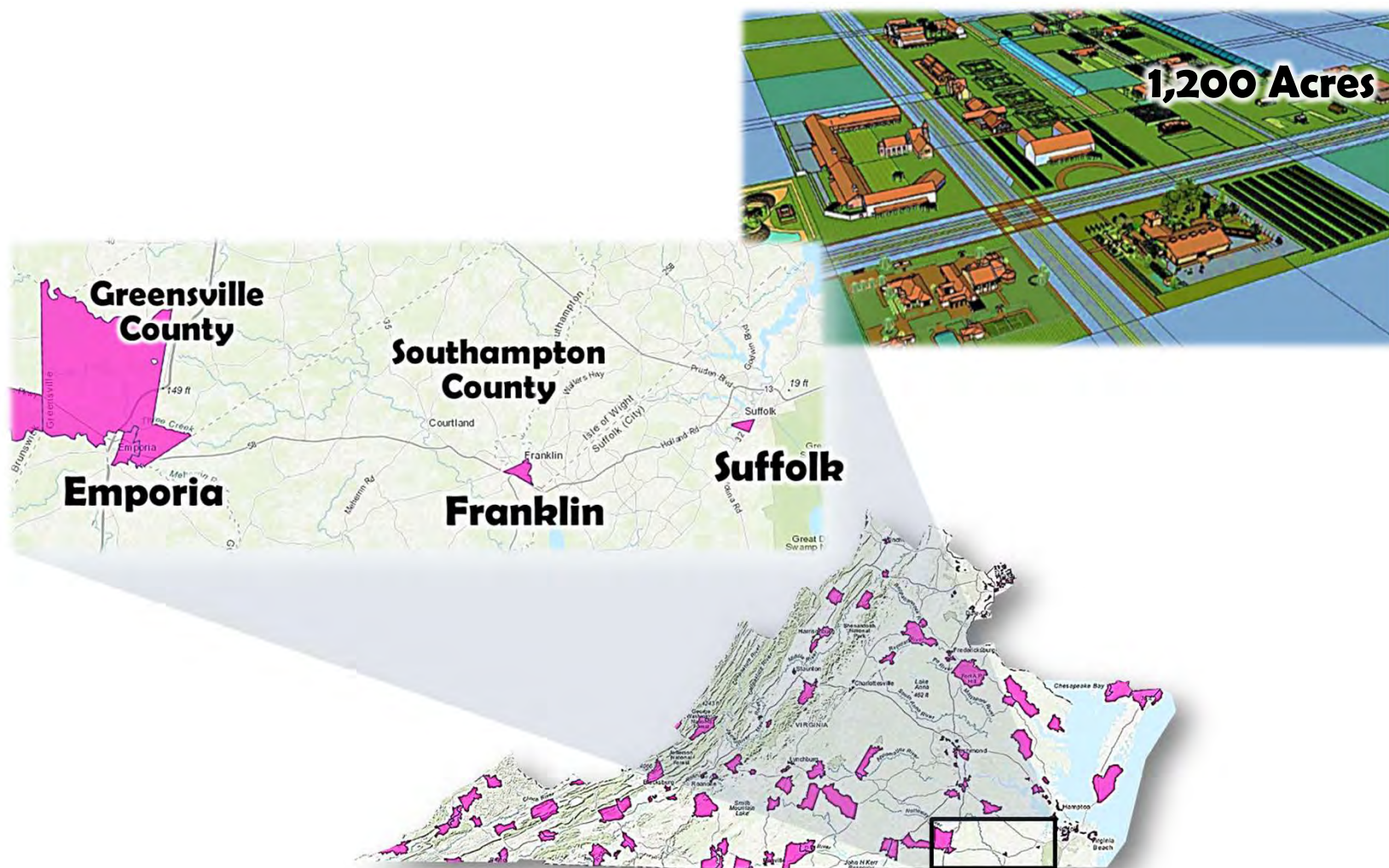
***Jobenomics Richmond* is a proposed program for creating mixed-use, master-planned, locally-owned, live-work communities in under-resourced areas in Richmond with an emphasis on obtaining Qualified Opportunity Zone funding.**

By: Bishop Leon Benjamin, Jobenomics Richmond
Chuck Vollmer, Jobenomics Founder & President
28 December 2019



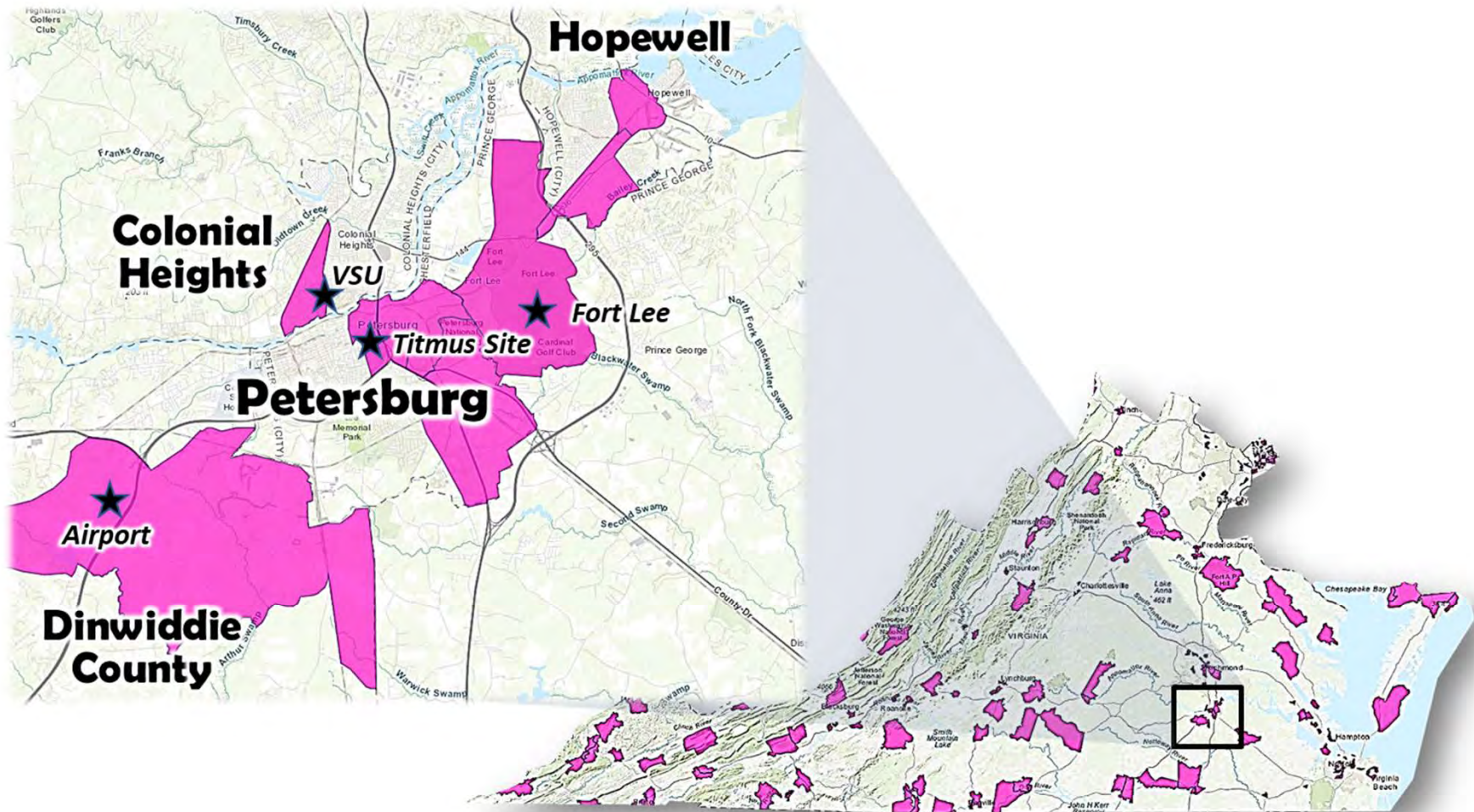
“Our VA4 team has a detailed program for Richmond and held our first stakeholder meeting in December 2019.”

Southern VA4 Opportunity Zones



The VA4 Team has architectures and business plans for large (1,000+ acre), master-planned, mixed-use agricultural projects.

Petersburg Region Opportunity Zones

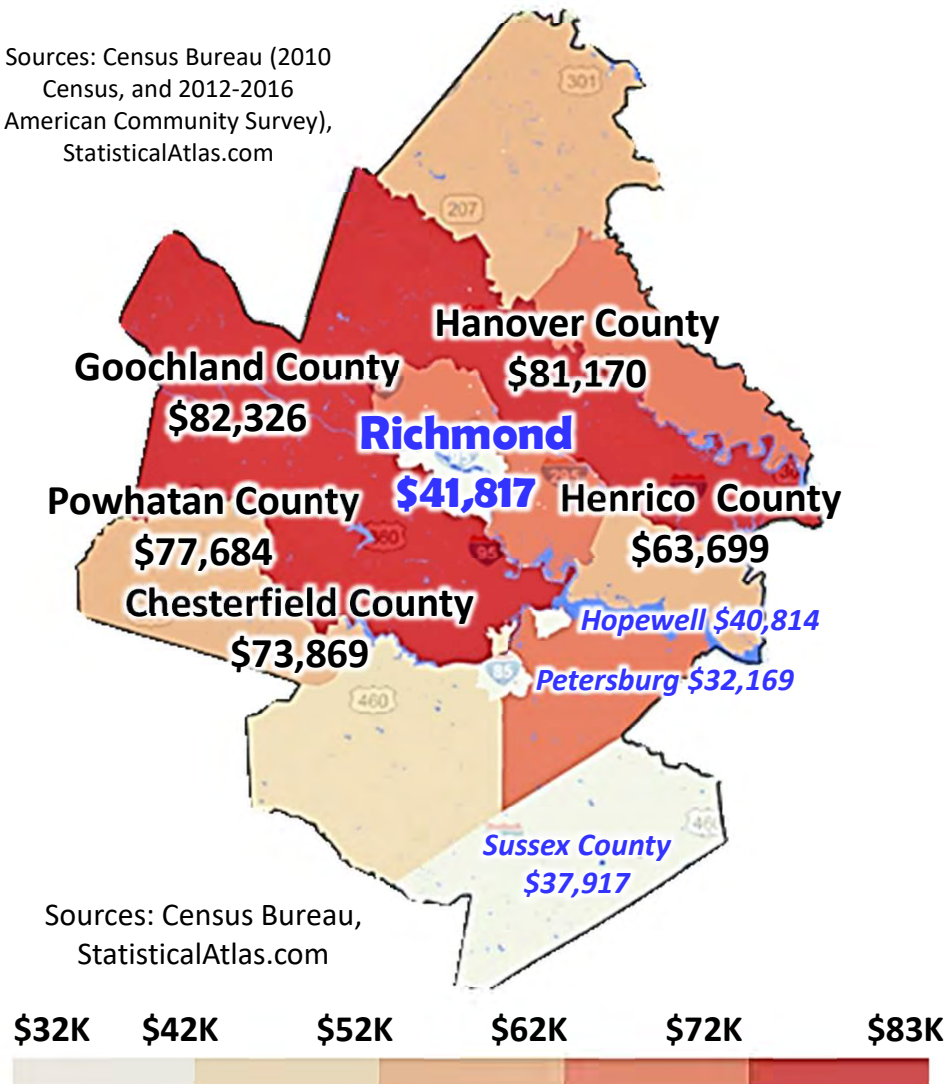


The VA4 Team is working with Petersburg City officials regarding Opportunity Zone projects in the Petersburg region.

Richmond Area Underserved Communities

Median Household Income

Sources: Census Bureau (2010
Census, and 2012-2016
American Community Survey),
StatisticalAtlas.com



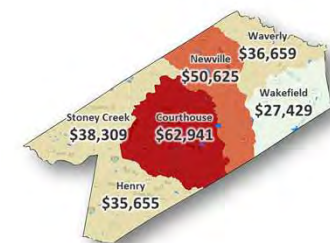
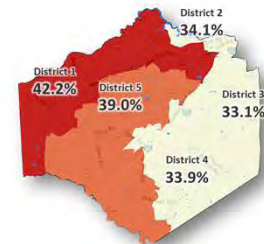
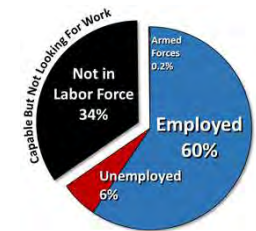
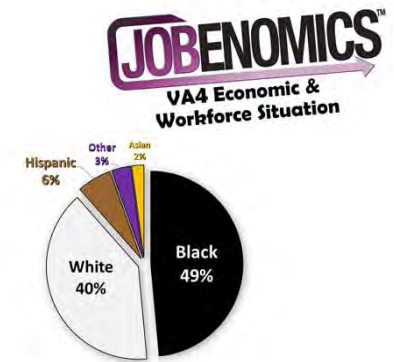
Median Household Income By Race/Ethnicity

- Asian: \$82.8K
- White: \$72.2K
- *Average:* \$61.6K
- Mixed: \$53.4K
- Hispanic: \$49.3K
- Black: \$41.8K

Urban and minority communities are the most underserved.

City & County Comparison Charts

- **Race & Ethnicity** charts show the degree of diversity (all ages and sexes) as well as the minority-majority makeup of the community.
- **Working Age Employment** (25 to 64 years old) charts focus on the status of the most productive element of the community labor force.
- **High School Diploma** maps the percentage of adults (24+) with the **highest** level of achievement being a HS diploma or GED (*lower % = more educated, higher % = less educated community*).
- **Median Household Income** compares the income disparities within a given community and compares inequalities within the state of Virginia.



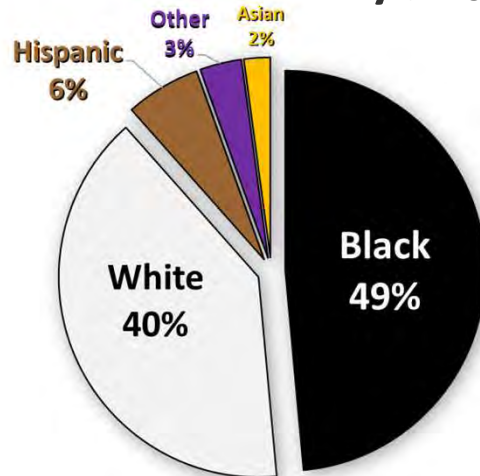
The VA4 team uses these metrics as a **starting point** for our economic, community, business and workforce development programs.

Richmond Status

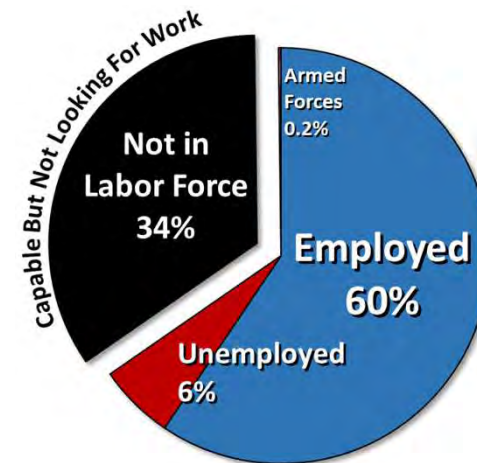
Source: Census Bureau,
StatisticalAtlas.com



Race & Ethnicity (All Ages)

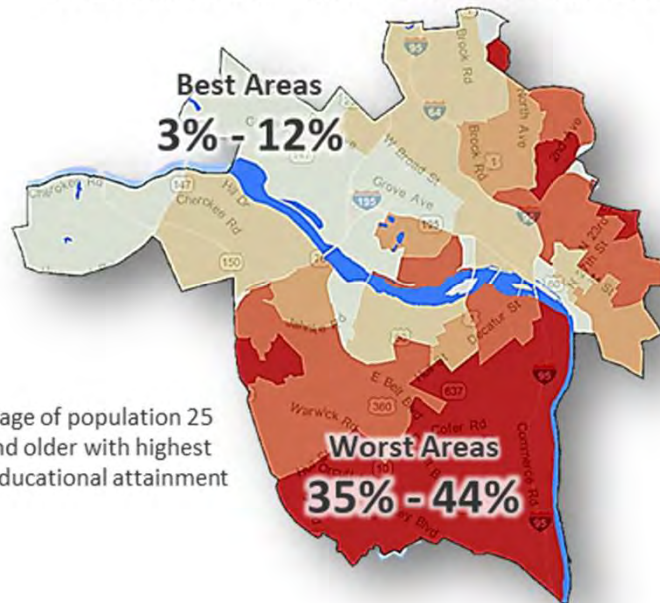


Working Age Employment (25 to 64)



High School Diploma or Equivalent

(Best County in Virginia: Fairfax 12.7%
Best Subdivision in Fairfax County: Hunter Mill 8.7%)



Percentage of population 25 years and older with highest level of educational attainment

Median Household Income

(Best County in Virginia: Loudoun \$125,672,
Best Subdivision in Loudoun County: Catoctin \$149,550)



Richmond Underserved Neighborhoods

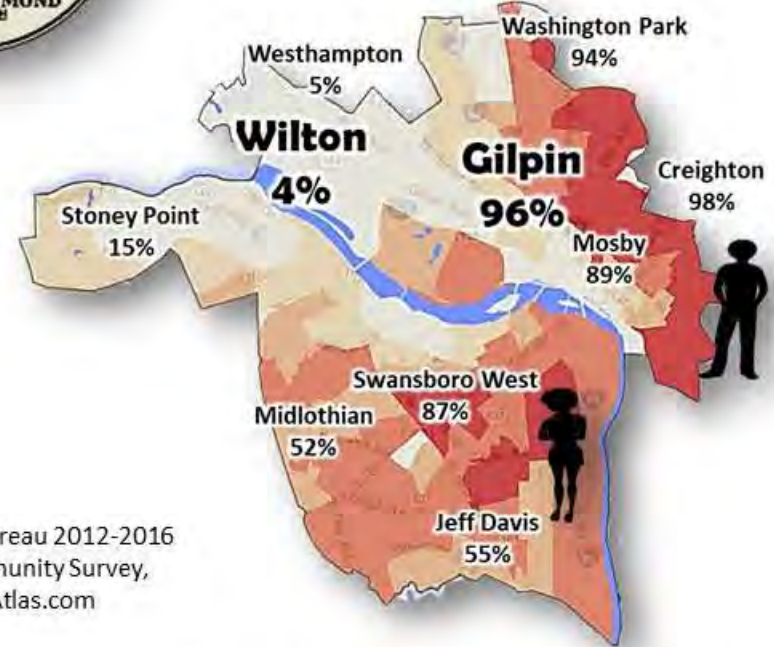
Median Household Income

By Tract



African American Population

By Tract



Source: Census Bureau 2012-2016
American Community Survey,
StatisticalAtlas.com

\$9K \$54K \$99K \$143K \$187K \$232K

Unusual wide range of incomes.

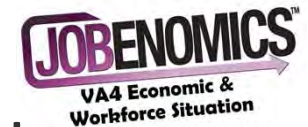
0% 20% 39% 59% 79% 99%

Very diverse community.

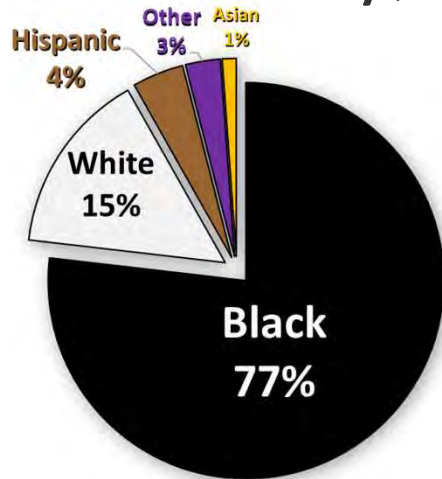
Minority communities are the most underserved.

Petersburg Status

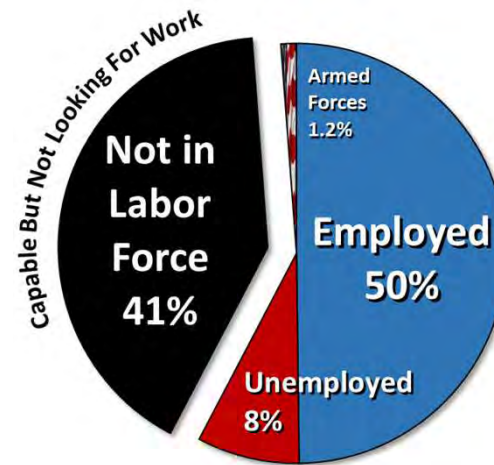
Source: Census Bureau,
StatisticalAtlas.com



Race & Ethnicity (All Ages)

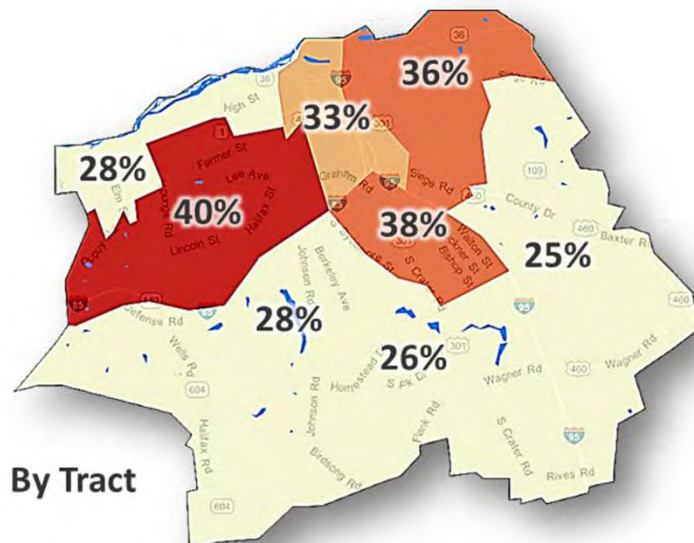


Working Age Employment (25 to 64)



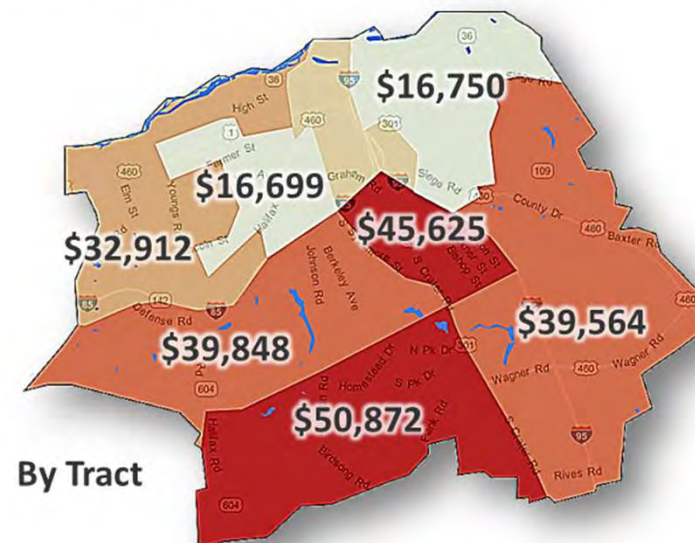
High School Diploma or Equivalent

(Best County in Virginia: Fairfax 12.7%
Best Subdivision in Fairfax County: Hunter Mill 8.7%)



Median Household Income

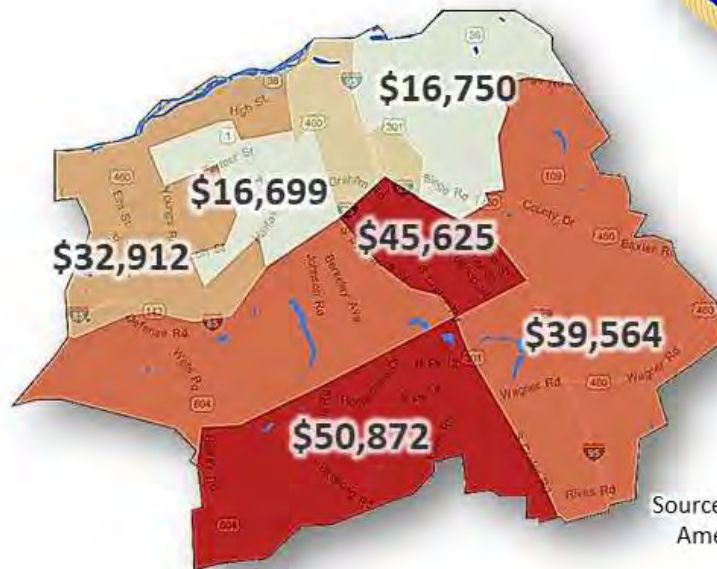
(Best County in Virginia: Loudoun \$125,672,
Best Subdivision in Loudoun County: Catoctin \$149,550)



Petersburg Underserved Neighborhoods

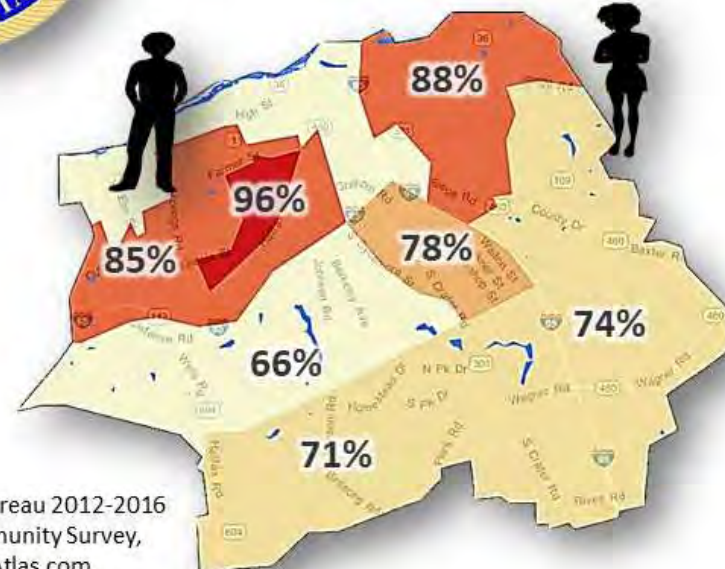
Median Household Income

By Tract



African American Population

By Tract



Source: Census Bureau 2012-2016
American Community Survey,
StatisticalAtlas.com

\$16K \$24K \$30K \$37K \$44K **\$51K** **62%** 69% 76% 82% 89% 96%

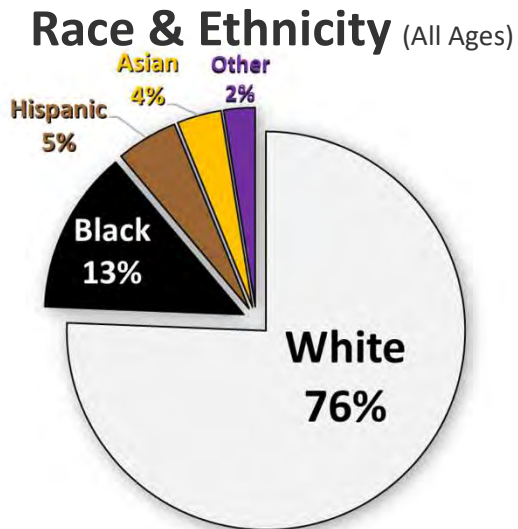
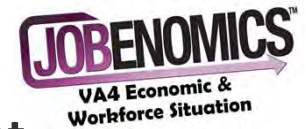
**All Richmond tracts are well below
the Virginia average of \$73K.**

**Every tract in Richmond is at least
62% African American by population.**

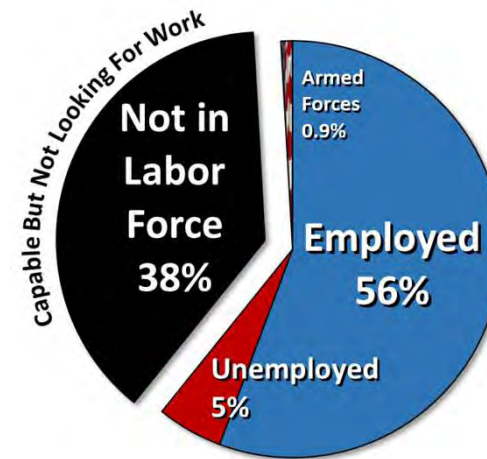
Minority communities are the most underserved.

Colonial Heights Status

Source: Census Bureau,
StatisticalAtlas.com

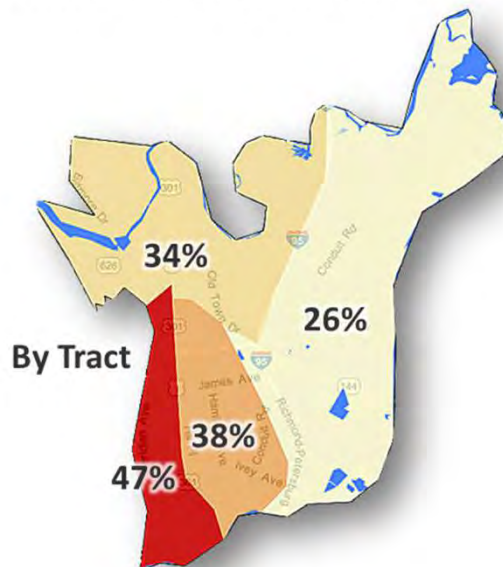


Working Age Employment (25 to 64)



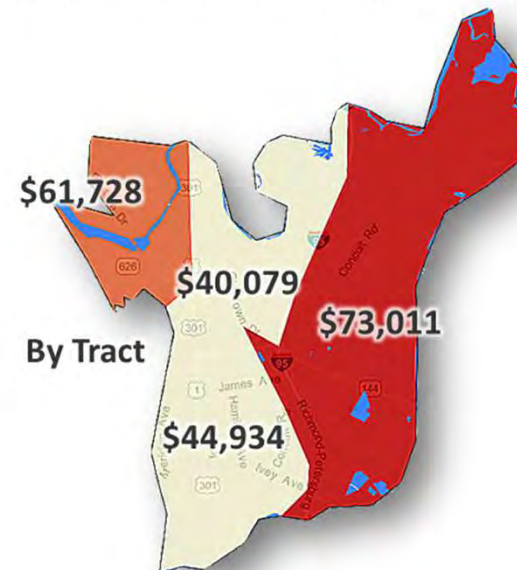
High School Diploma or Equivalent

(Best County in Virginia: Fairfax 12.7%
Best Subdivision in Fairfax County: Hunter Mill 8.7%)



Median Household Income

(Best County in Virginia: Loudoun \$125,672,
Best Subdivision in Loudoun County: Catoctin \$149,550)

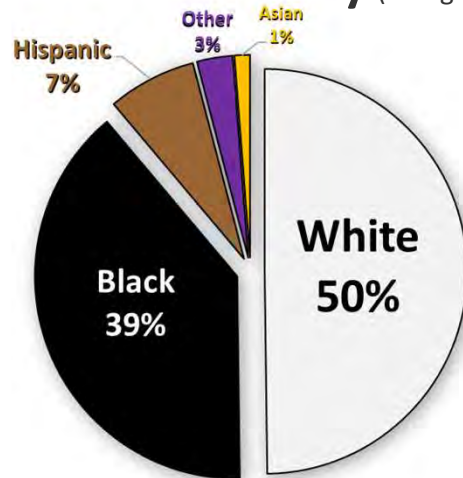


Hopewell Status

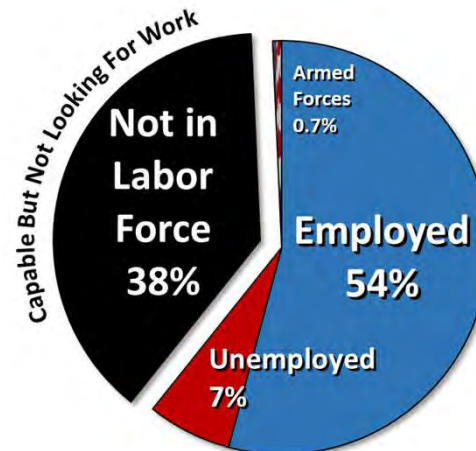
Source: Census Bureau,
StatisticalAtlas.com



Race & Ethnicity (All Ages)

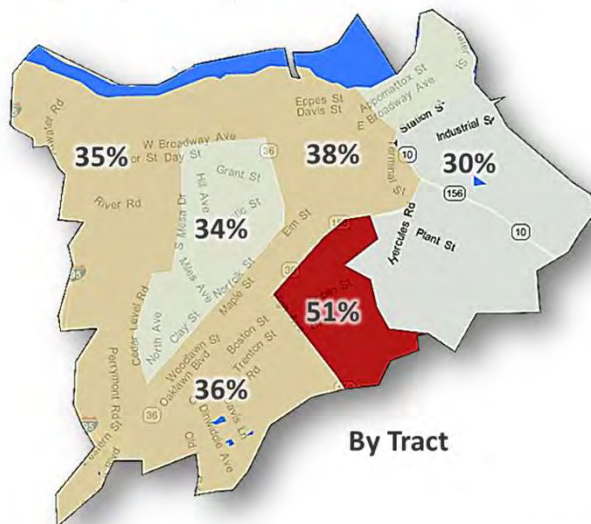


Working Age Employment (25 to 64)



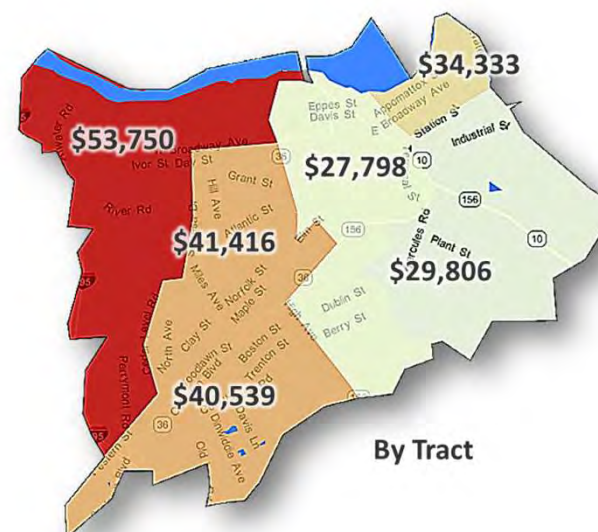
High School Diploma or Equivalent

(Best County in Virginia: Fairfax 12.7%
Best Subdivision in Fairfax County: Hunter Mill 8.7%)



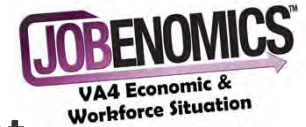
Median Household Income

(Best County in Virginia: Loudoun \$125,672,
Best Subdivision in Loudoun County: Catoctin \$149,550)

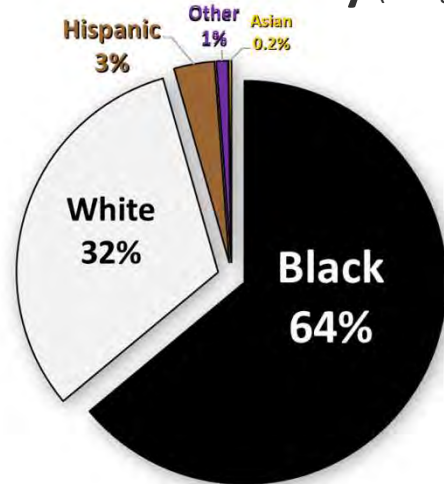


Emporia Status

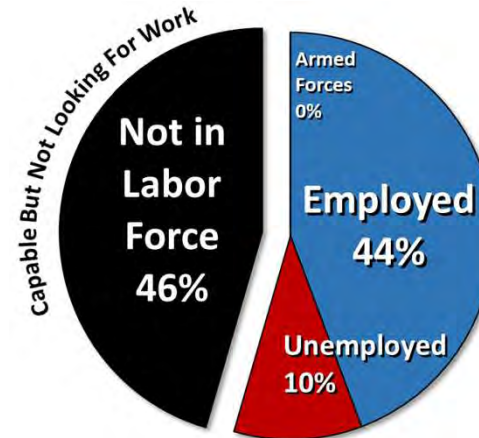
Source: Census Bureau,
StatisticalAtlas.com



Race & Ethnicity (All Ages)



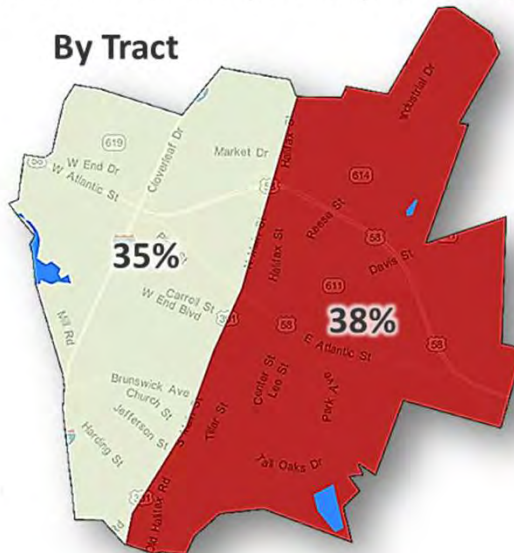
Working Age Employment (25 to 64)



High School Diploma or Equivalent

(Best County in Virginia: Fairfax 12.7%
Best Subdivision in Fairfax County: Hunter Mill 8.7%)

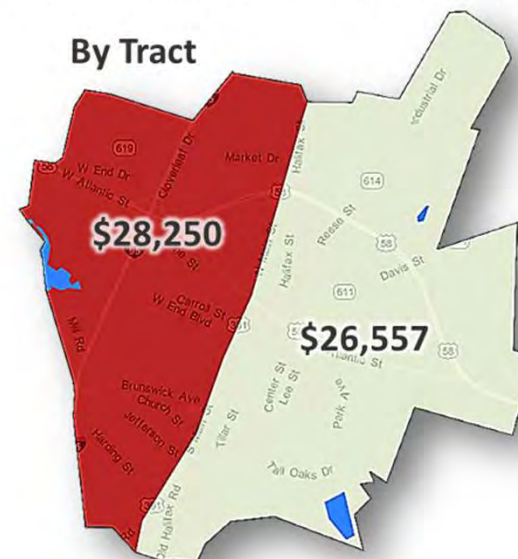
By Tract



Median Household Income

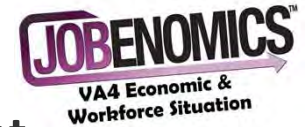
(Best County in Virginia: Loudoun \$125,672,
Best Subdivision in Loudoun County: Catoctin \$149,550)

By Tract

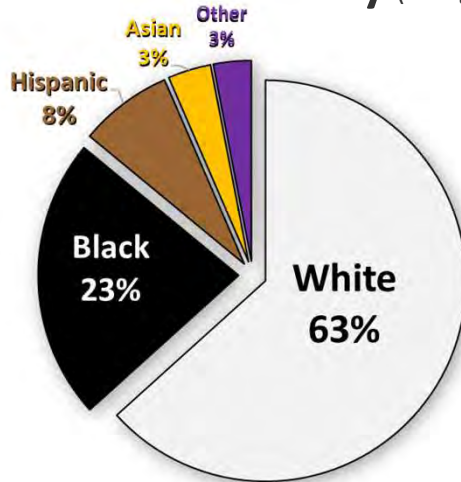


Chesterfield County Status

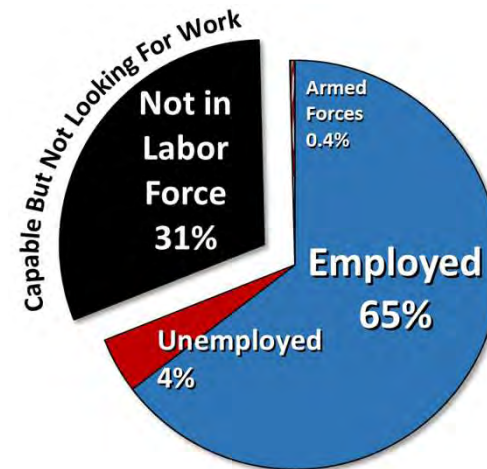
Source: Census Bureau,
StatisticalAtlas.com



Race & Ethnicity (All Ages)

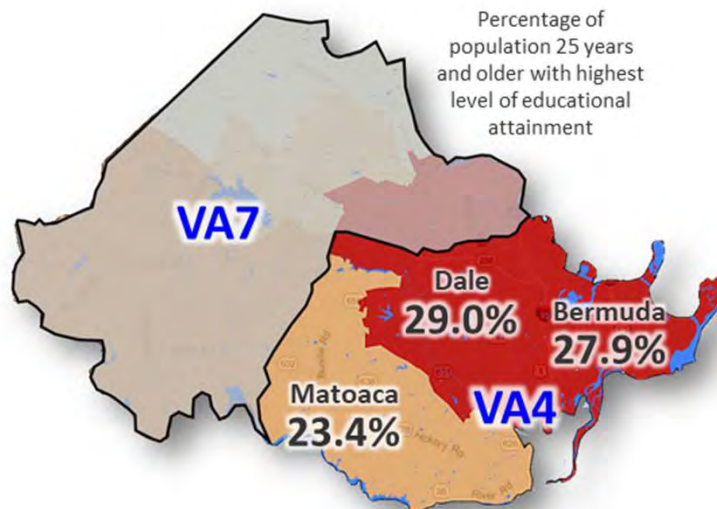


Working Age Employment (25 to 64)



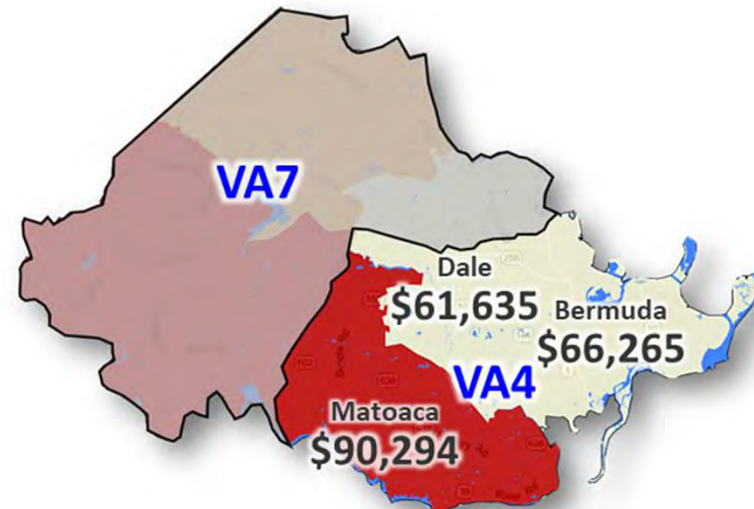
High School Diploma or Equivalent

(Best County in Virginia: Fairfax 12.7%
Best Subdivision in Fairfax County: Hunter Mill 8.7%)



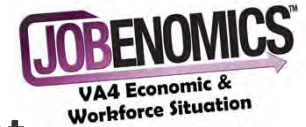
Median Household Income

(Best County in Virginia: Loudoun \$125,672,
Best Subdivision in Loudoun County: Catoctin \$149,550)

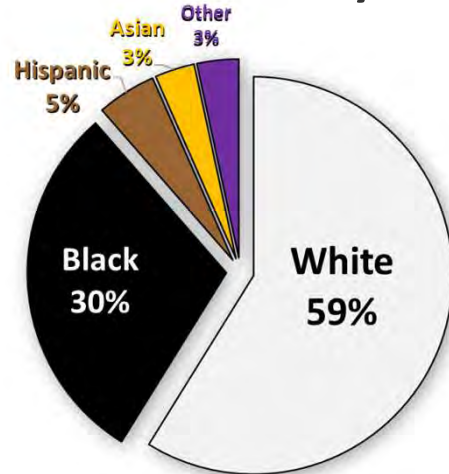


Chesapeake County Status

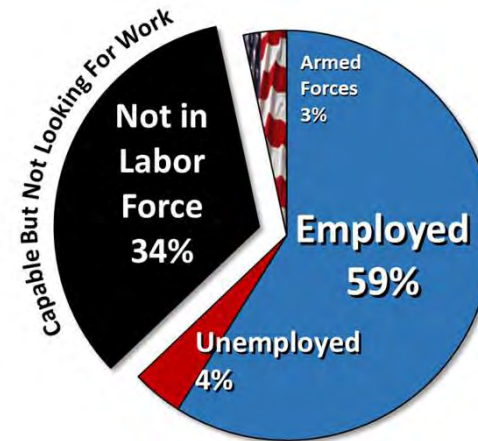
Source: Census Bureau,
StatisticalAtlas.com



Race & Ethnicity (All Ages)



Working Age Employment (25 to 64)

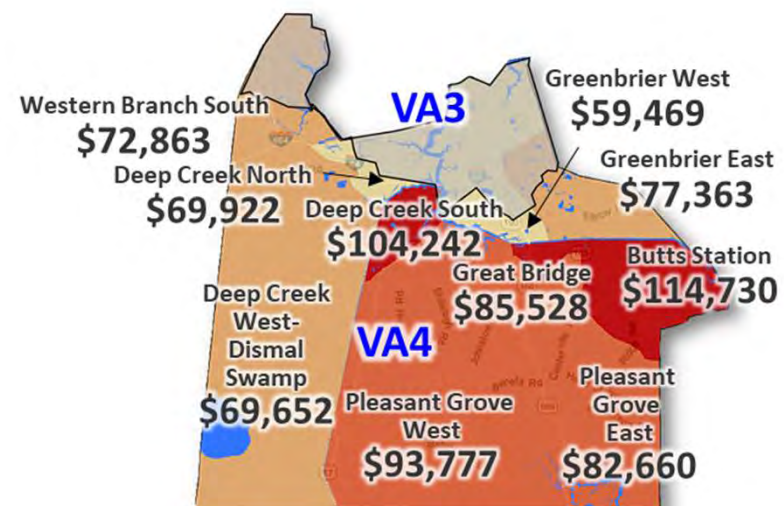
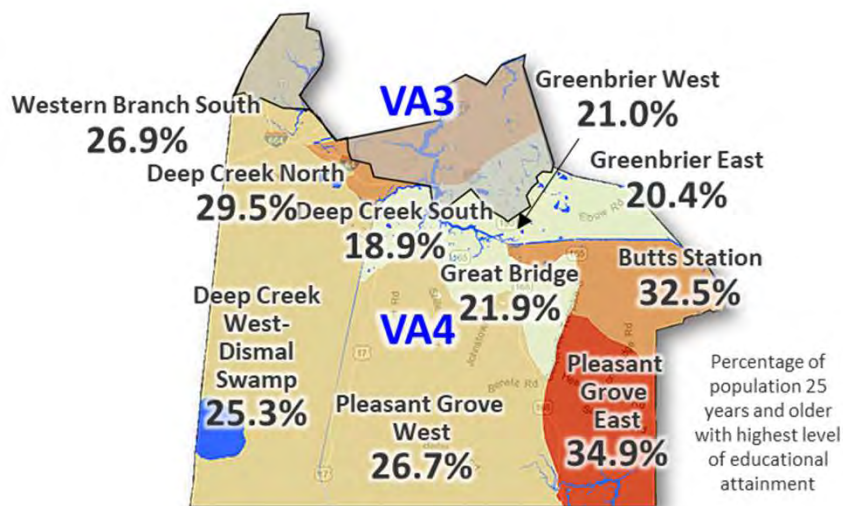


High School Diploma or Equivalent

(Best County in Virginia: Fairfax 12.7%
Best Subdivision in Fairfax County: Hunter Mill 8.7%)

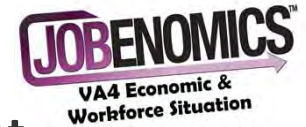
Median Household Income

(Best County in Virginia: Loudoun \$125,672,
Best Subdivision in Loudoun County: Catoctin \$149,550)

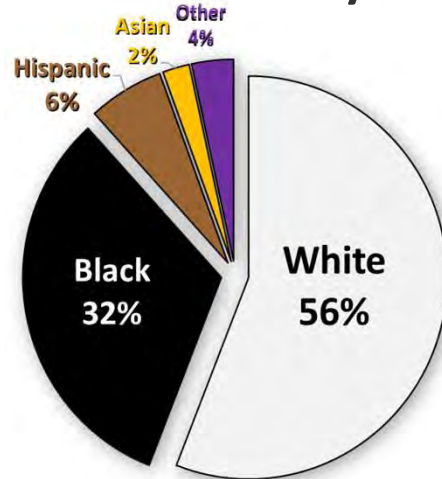


Prince George County Status

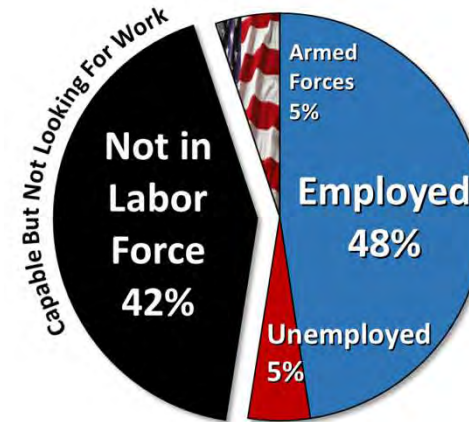
Source: Census Bureau,
StatisticalAtlas.com



Race & Ethnicity (All Ages)

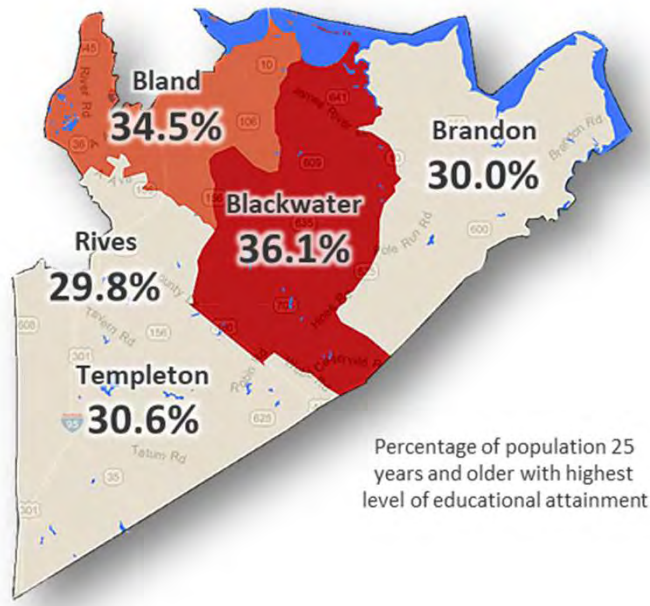


Working Age Employment (25 to 64)



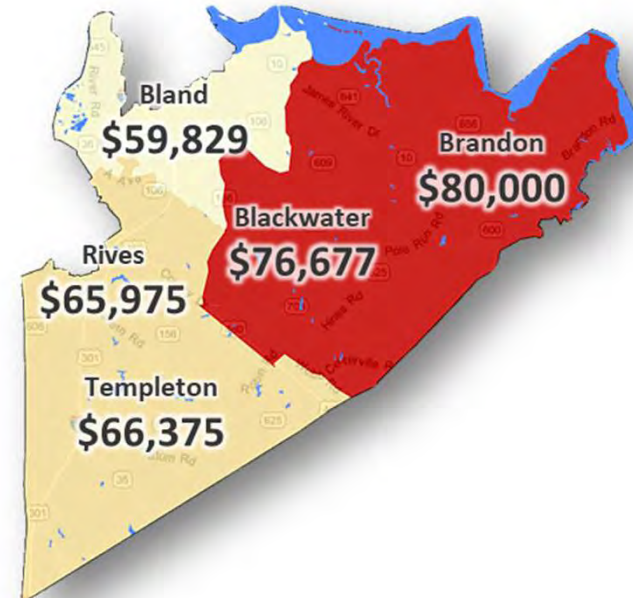
High School Diploma or Equivalent

(Best County in Virginia: Fairfax 12.7%
Best Subdivision in Fairfax County: Hunter Mill 8.7%)



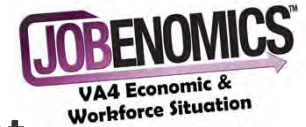
Median Household Income

(Best County in Virginia: Loudoun \$125,672,
Best Subdivision in Loudoun County: Catocin \$149,550)

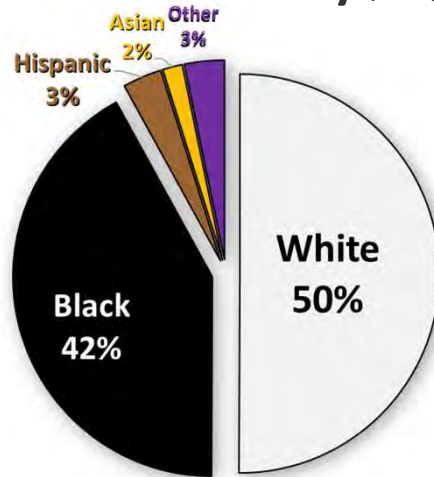


Suffolk County Status

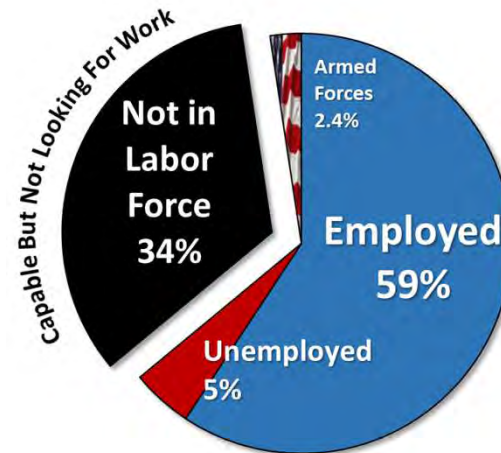
Source: Census Bureau,
StatisticalAtlas.com



Race & Ethnicity (All Ages)

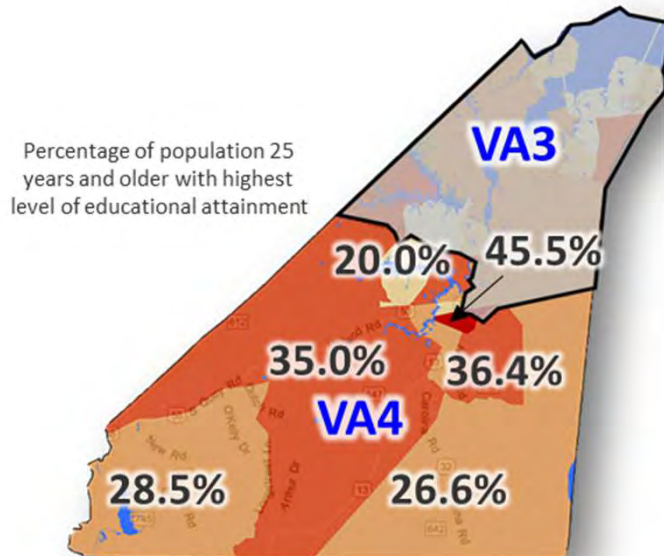


Working Age Employment (25 to 64)



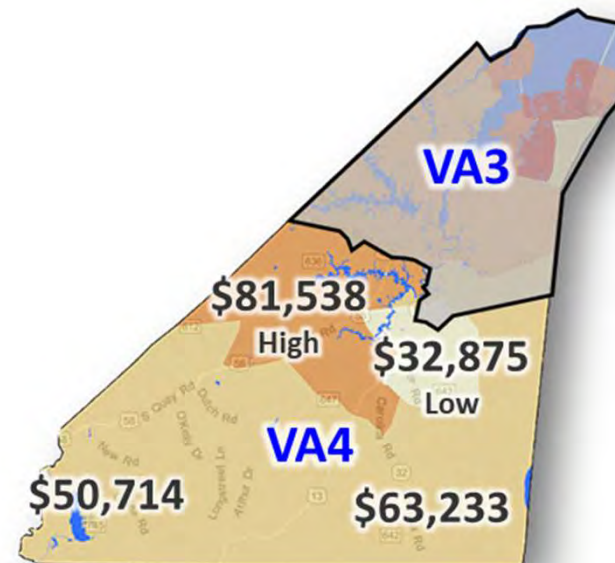
High School Diploma or Equivalent

(Best County in Virginia: Fairfax 12.7%
Best Subdivision in Fairfax County: Hunter Mill 8.7%)



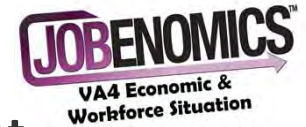
Median Household Income

(Best County in Virginia: Loudoun \$125,672,
Best Subdivision in Loudoun County: Catoctin \$149,550)

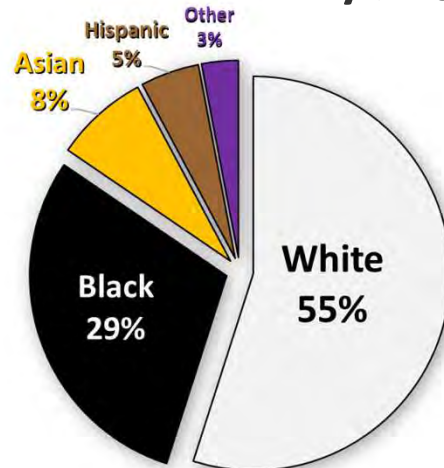


Henrico County Status

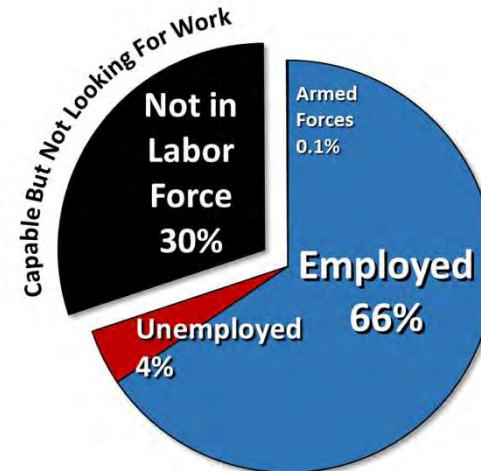
Source: Census Bureau,
StatisticalAtlas.com



Race & Ethnicity (All Ages)

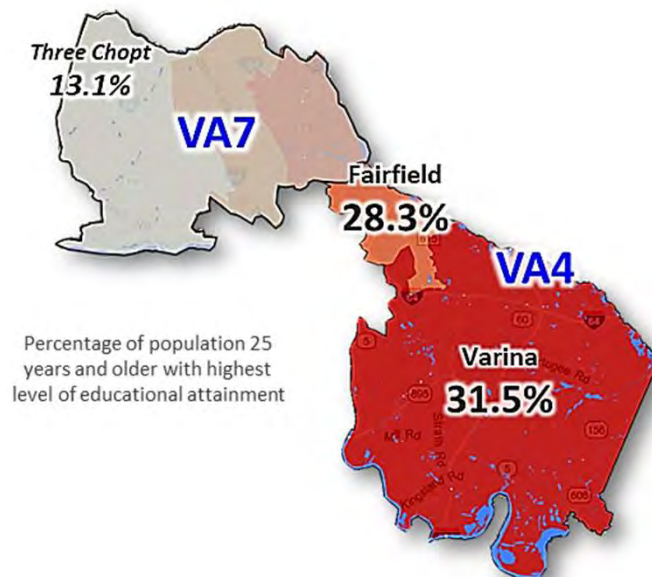


Working Age Employment (25 to 64)



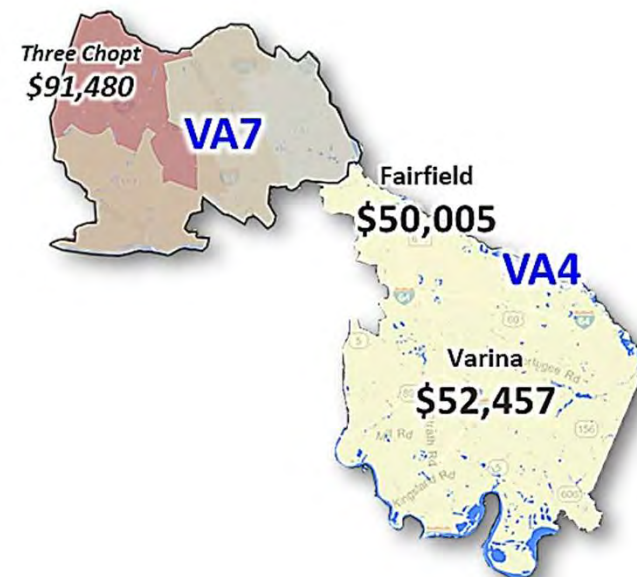
High School Diploma or Equivalent

(Best County in Virginia: Fairfax 12.7%
Best Subdivision in Fairfax County: Hunter Mill 8.7%)



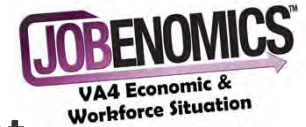
Median Household Income

(Best County in Virginia: Loudoun \$125,672,
Best Subdivision in Loudoun County: Catoctin \$149,550)

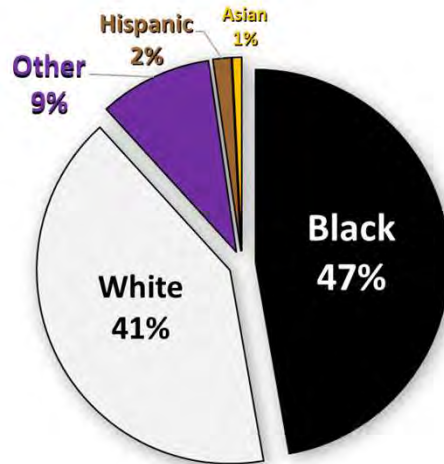


Charles City County Status

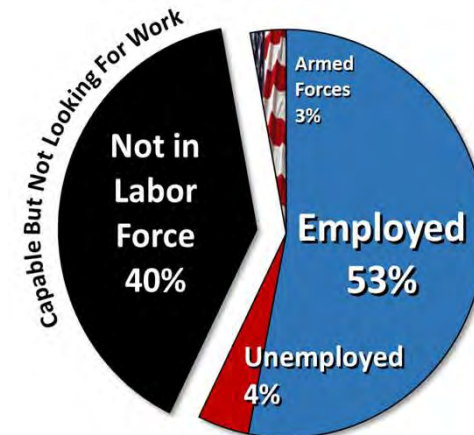
Source: Census Bureau,
StatisticalAtlas.com



Race & Ethnicity (All Ages)

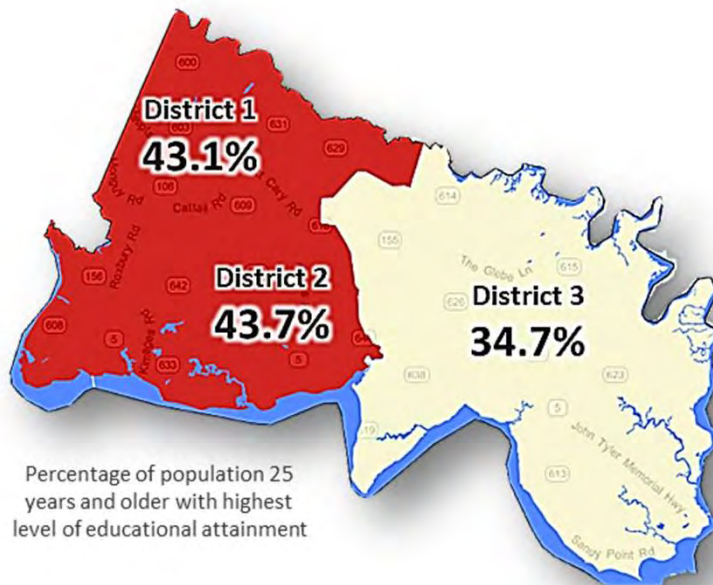


Working Age Employment (25 to 64)



High School Diploma or Equivalent

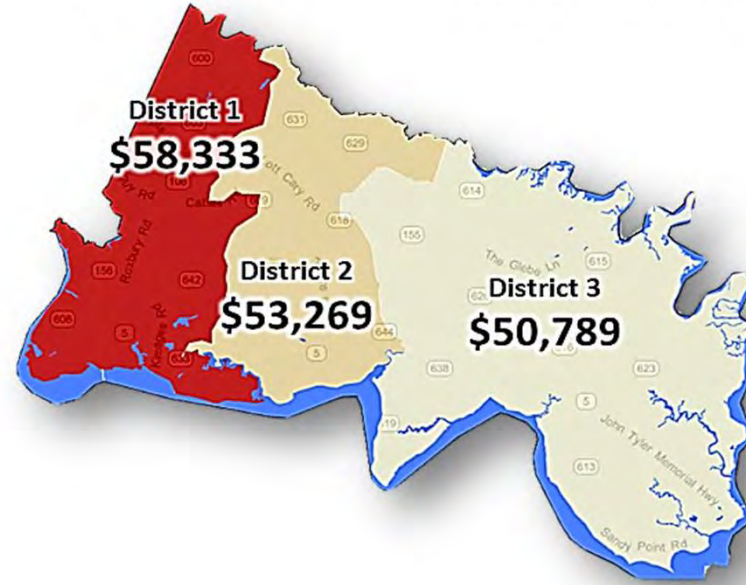
(Best County in Virginia: Fairfax 12.7%
Best Subdivision in Fairfax County: Hunter Mill 8.7%)



Percentage of population 25
years and older with highest
level of educational attainment

Median Household Income

(Best County in Virginia: Loudoun \$125,672,
Best Subdivision in Loudoun County: Catoctin \$149,550)

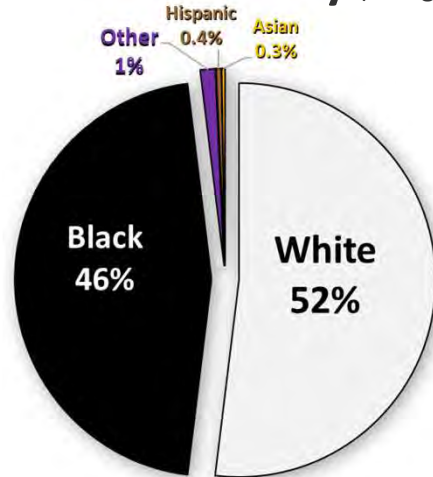


Surry County Status

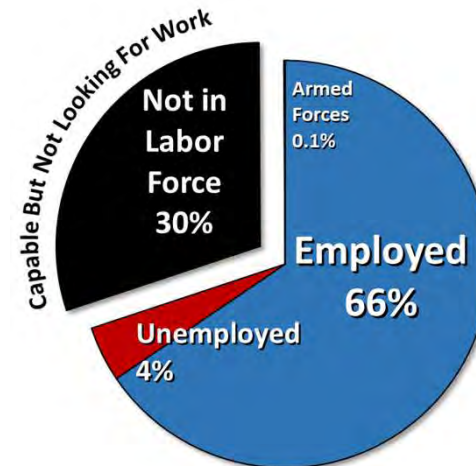
Source: Census Bureau,
StatisticalAtlas.com



Race & Ethnicity (All Ages)

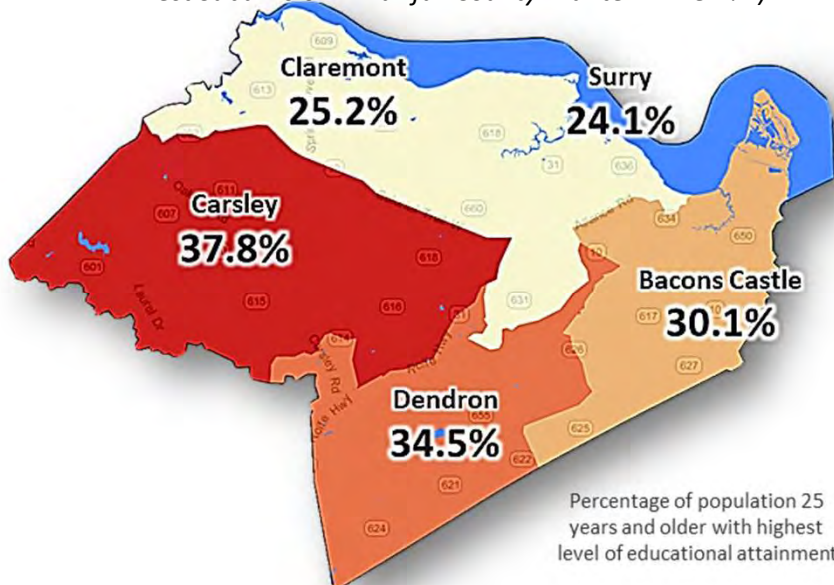


Working Age Employment (25 to 64)



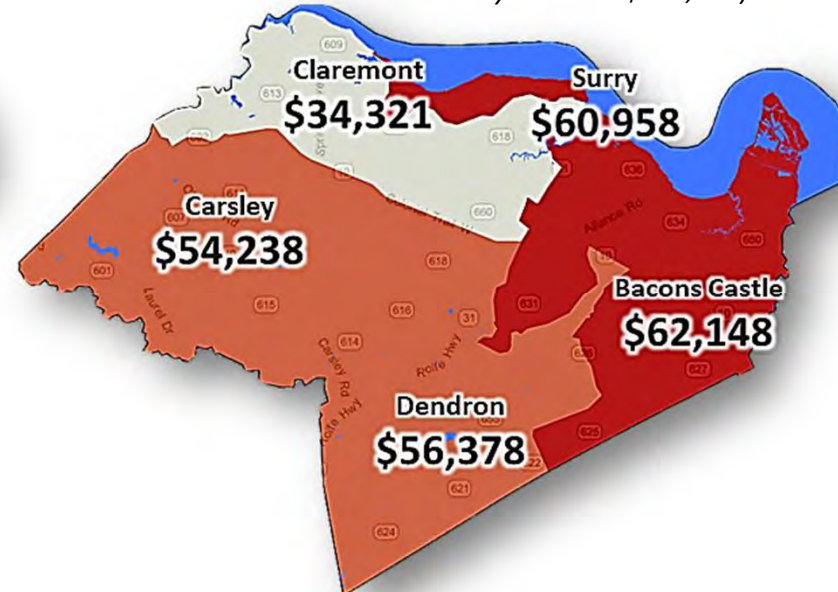
High School Diploma or Equivalent

(Best County in Virginia: Fairfax 12.7%)
(Best Subdivision in Fairfax County: Hunter Mill 8.7%)



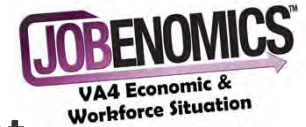
Median Household Income

(Best County in Virginia: Loudoun \$125,672,
Best Subdivision in Loudoun County: Catocin \$149,550)

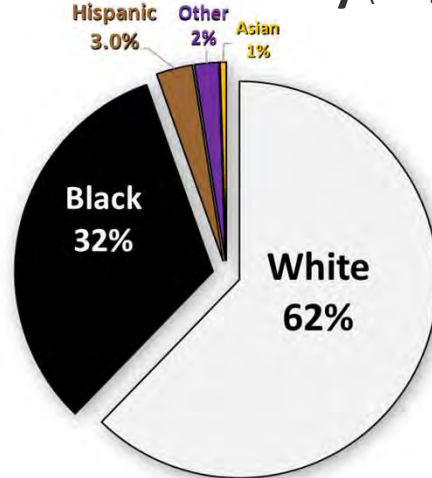


Dinwiddie County Status

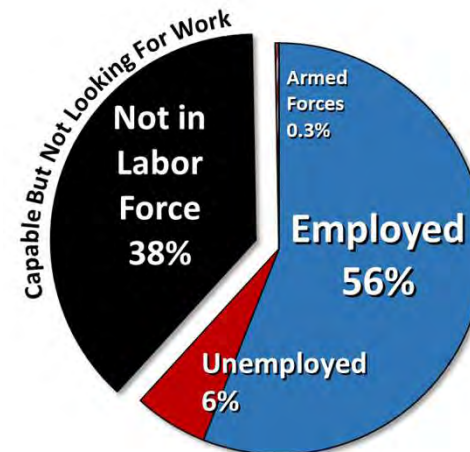
Source: Census Bureau,
StatisticalAtlas.com



Race & Ethnicity (All Ages)

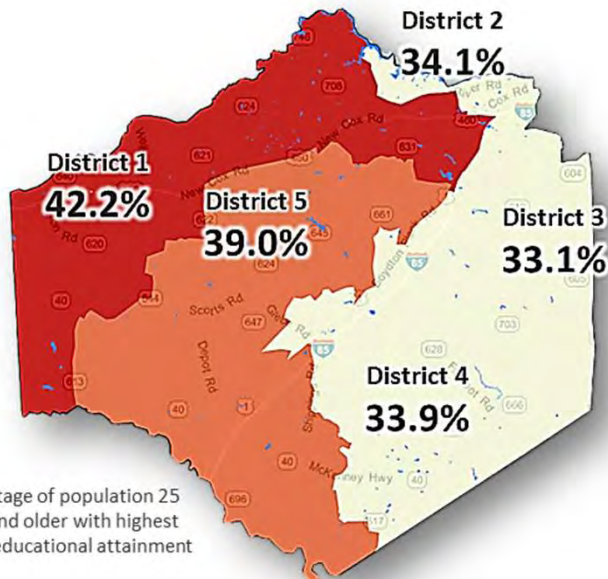


Working Age Employment (25 to 64)



High School Diploma or Equivalent

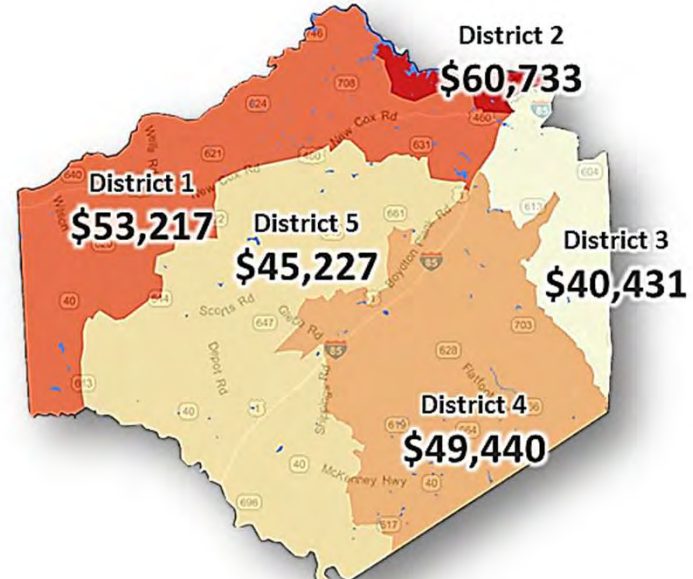
(Best County in Virginia: Fairfax 12.7%
Best Subdivision in Fairfax County: Hunter Mill 8.7%)



Percentage of population 25 years and older with highest level of educational attainment

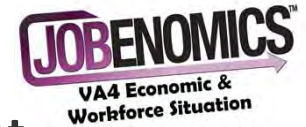
Median Household Income

(Best County in Virginia: Loudoun \$125,672,
Best Subdivision in Loudoun County: Catoctin \$149,550)

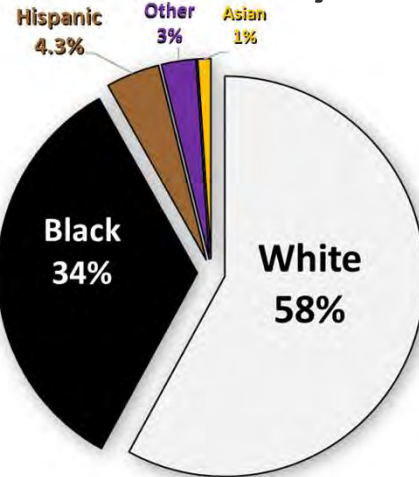


Southampton County Status

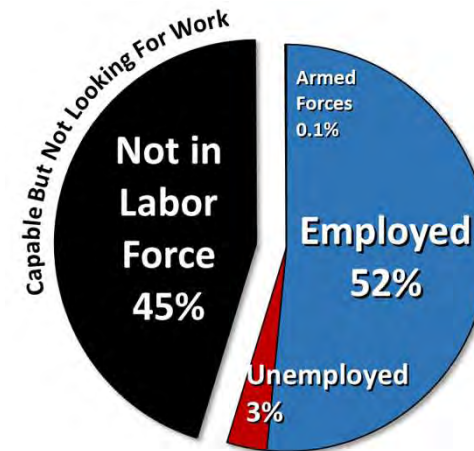
Source: Census Bureau,
StatisticalAtlas.com



Race & Ethnicity (All Ages)

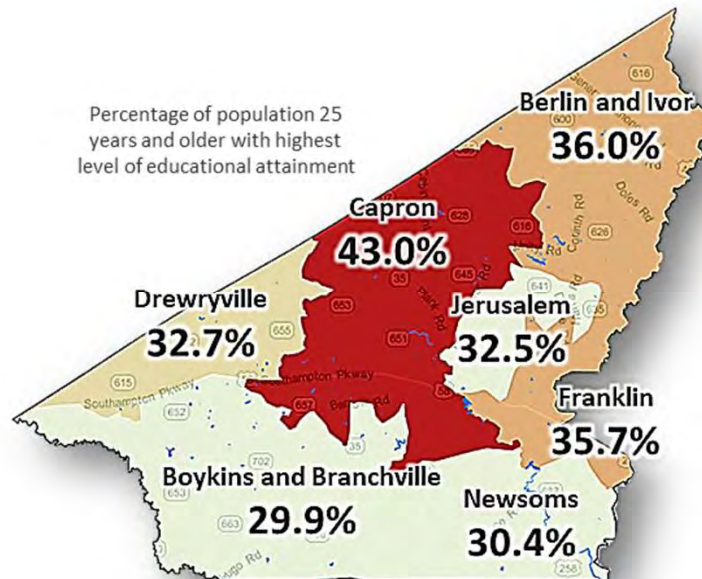


Working Age Employment (25 to 64)



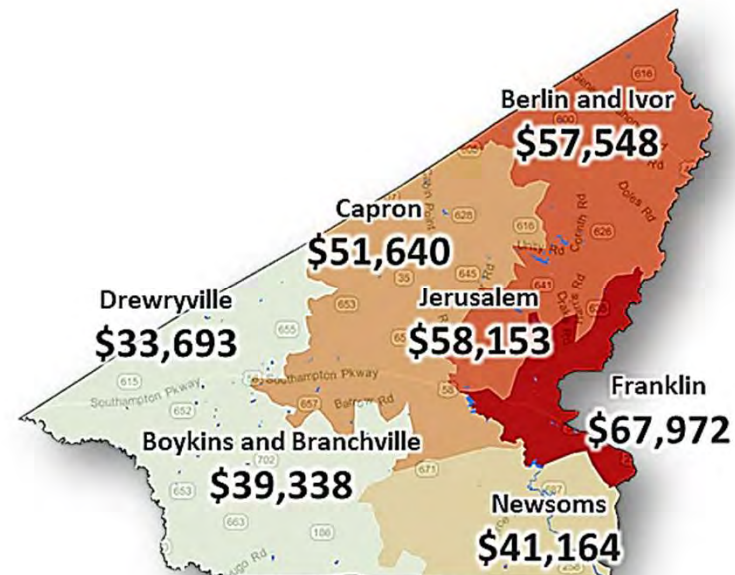
High School Diploma or Equivalent

(Best County in Virginia: Fairfax 12.7%
Best Subdivision in Fairfax County: Hunter Mill 8.7%)



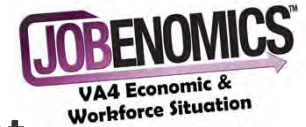
Median Household Income

(Best County in Virginia: Loudoun \$125,672,
Best Subdivision in Loudoun County: Catoctin \$149,550)

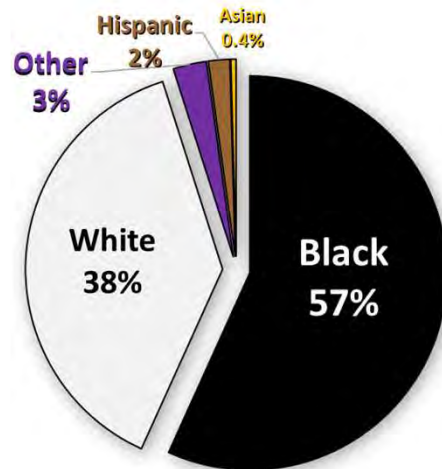


Sussex County Status

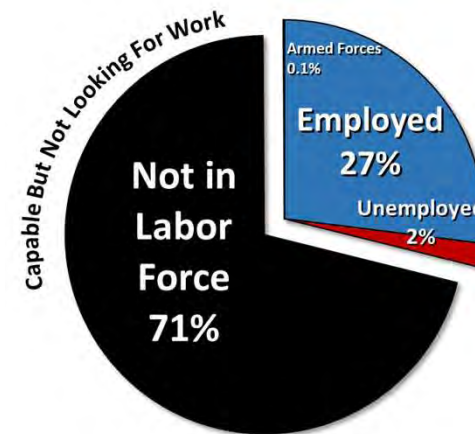
Source: Census Bureau,
StatisticalAtlas.com



Race & Ethnicity (All Ages)

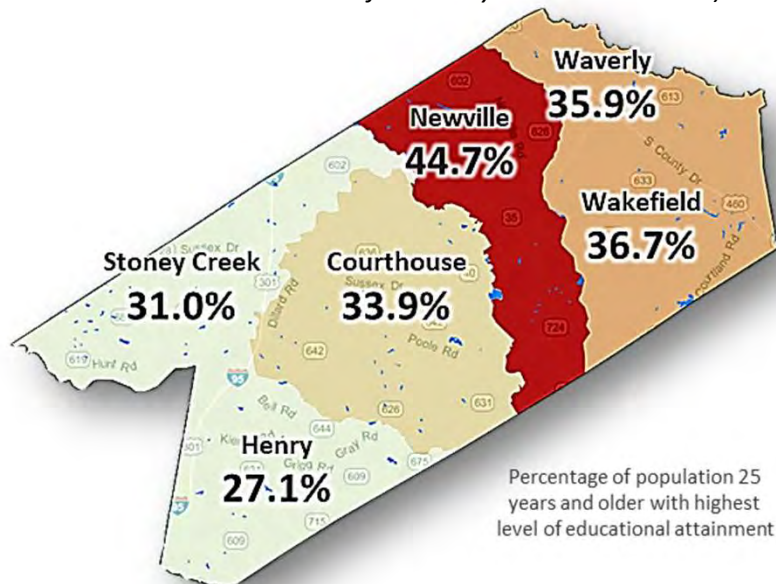


Working Age Employment (25 to 64)



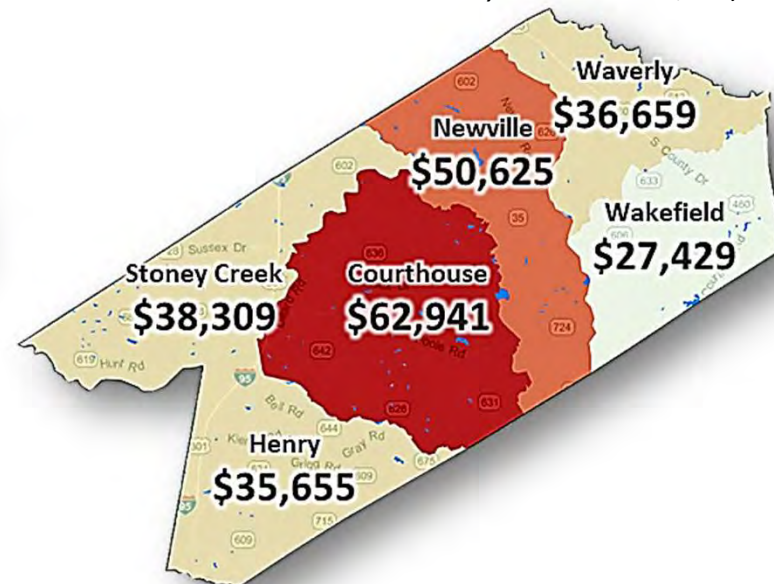
High School Diploma or Equivalent

(Best County in Virginia: Fairfax 12.7%)
Best Subdivision in Fairfax County: Hunter Mill 8.7%)



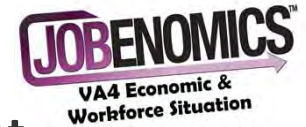
Median Household Income

(Best County in Virginia: Loudoun \$125,672,
Best Subdivision in Loudoun County: Catoclin \$149,550)

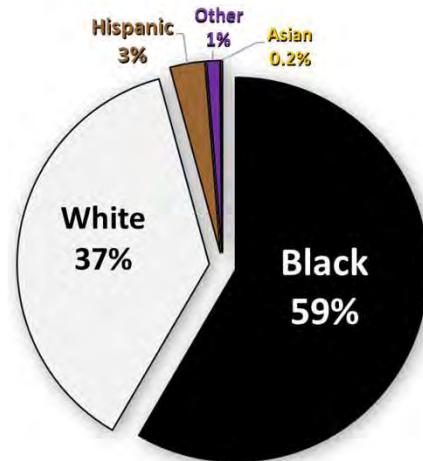


Greenville County Status

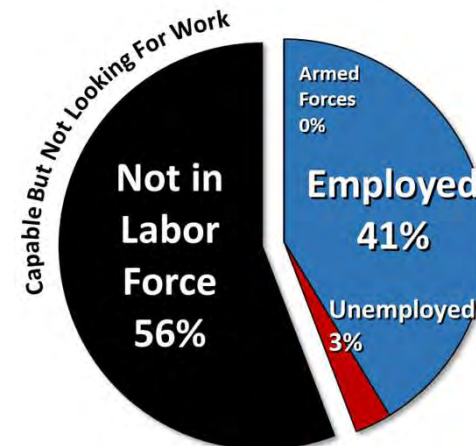
Source: Census Bureau,
StatisticalAtlas.com



Race & Ethnicity (All Ages)

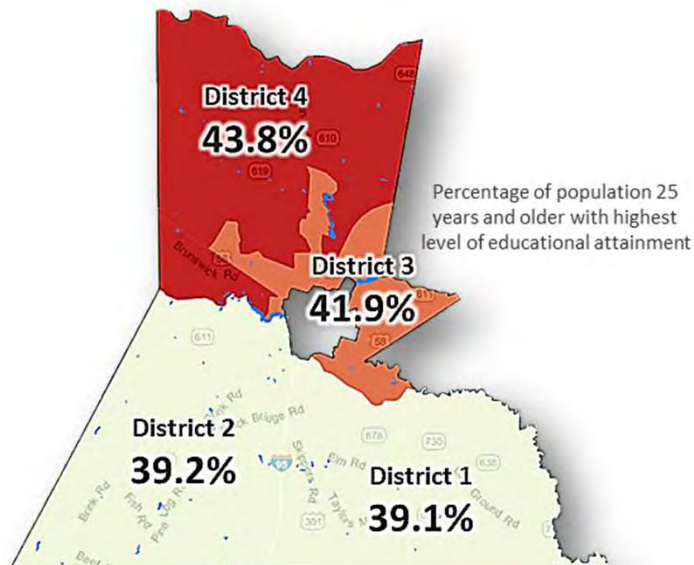


Working Age Employment (25 to 64)



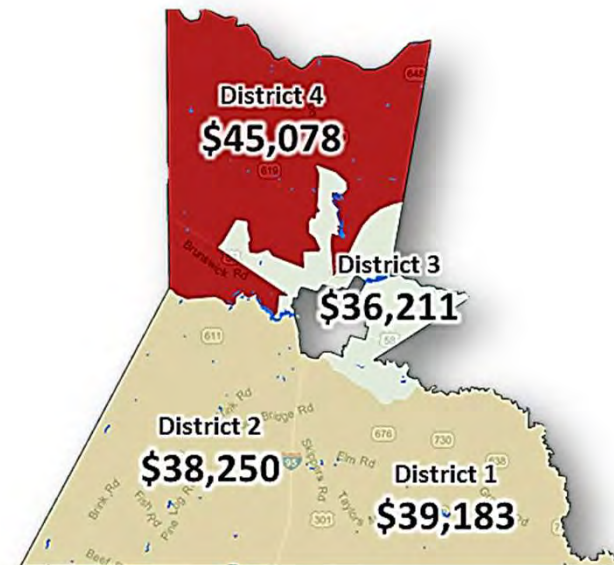
High School Diploma or Equivalent

(Best County in Virginia: Fairfax 12.7%
Best Subdivision in Fairfax County: Hunter Mill 8.7%)



Median Household Income

(Best County in Virginia: Loudoun \$125,672,
Best Subdivision in Loudoun County: Catoctin \$149,550)



Contact Information



Bishop Leon Benjamin, Jobenomics Senior Advisor,
(804) 426-5314, coalitionofleadersva@gmail.com

www.Benjamin4Congress.com/



Chuck Vollmer, Jobenomics Founder & President,
(703) 319-2090, cvollmer@Jobenomics.com

www.Jobenomics.com